

Compensated High Current Choke, 3-phase



**Description**

- Current compensated choke
- 3-phase choke
- Flexible wire
- Flange for mounting onto printed circuit board
- Fully potted resin

**Standards**

- EN 60938
- UL 1283
- CSA 22.2 no 8

**Applications**

- Placed in front of frequency converter
- Stepper motor drives
- UPS-systems
- Inverter

**Weblinks**

[pdf datasheet](#), [html-datasheet](#), [General Product Information](#), [Approvals](#), [CE declaration of conformity](#), [RoHS](#), [CHINA-RoHS](#), [REACH](#), [Distributor-Stock-Check](#), [Detailed request for product](#)

**Technical Data**

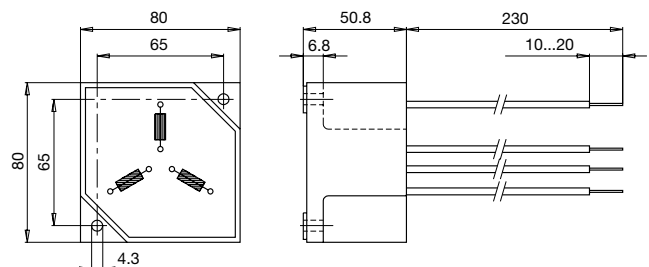
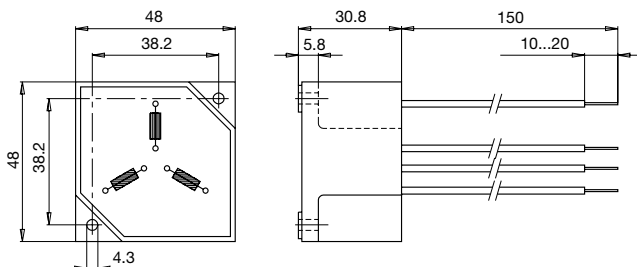
Rated voltage	up to 540 VAC	Test Voltage	2.5 kV, 50 Hz, 2 sec, winding to winding
	up to 760 VDC	Isolation Voltage	2.5 kV eff., 50 Hz, 2 sec, winding to ambient
Rated Current	10 - 50 A @ Ta 40 °C	Climatic Category	25/100/21 acc. to IEC 60068-1
Rated inductance	0.6 - 5 mH, Tol. -30% +50%	Allowable Operation Temp.	-25 °C to 100 °C
Power Operating Frequency	50 - 400 Hz		
Terminal Type	Flexible wire		
Weight	145 - 1864 g		
Material: Housing	UL 94V-0		
Sealing Compound	UL 94V-0		

Detailed information on product approvals, code requirements, usage instructions and detailed test conditions can be looked up in [General Product Information](#)

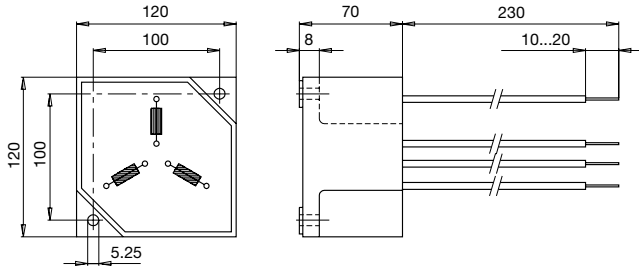
**Dimension**

Case 29-3W

Case 31-3W

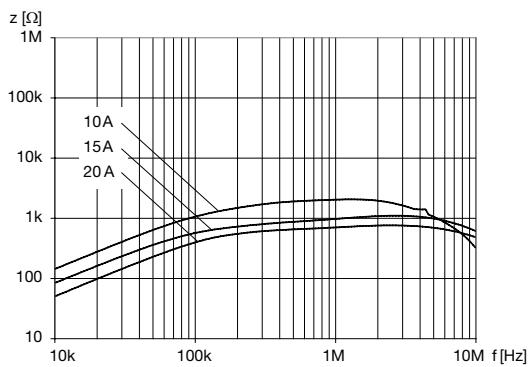


Case 33-3W

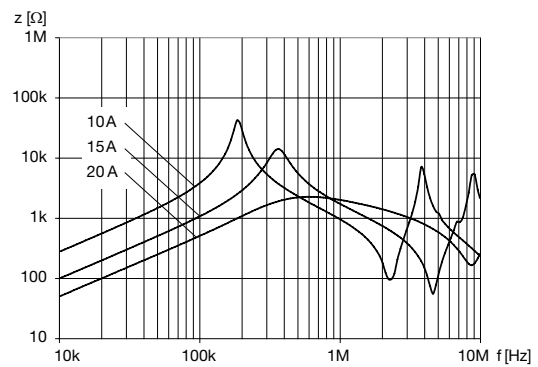


Impedance curves

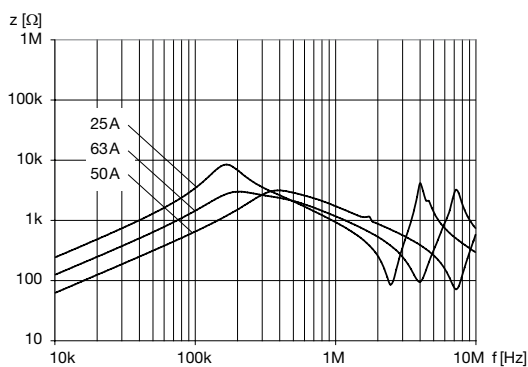
DKIP-0329-xxxx



DKIP-0331-xxxx



DKIP-0333-xxxx



All Variants

$I_n$ [A]	$L_n$ [mH]	$R_{cu}$ [m $\Omega$ ]	Power <sub>loss</sub> [W]	$f_{RES}$ [MHz]	Copper $\phi$ [mm]	Weight [g]	Housings	Packing unit [pcs.]	Order Number
10	2.5	15	4.5	0.5	1.25	145 g	29-3W	12	<a href="#">DKIP-0329-1002</a>
15	1	7	4.7	0.6	1.6	145 g	29-3W	12	<a href="#">DKIP-0329-1501</a>
20	0.6	5	6	2.6	1.8	145 g	29-3W	12	<a href="#">DKIP-0329-20D6</a>
10	5	32	9.6	0.22	1.25	526 g	31-3W	2	<a href="#">DKIP-0331-1005</a>
15	2	13	8.8	0.44	1.6	544 g	31-3W	2	<a href="#">DKIP-0331-1502</a>
20	1	8	9.6	0.68	1.8	544 g	31-3W	2	<a href="#">DKIP-0331-2001</a>
25	4	12	22.5	0.18	2	1830 g	33-3W	1	<a href="#">DKIP-0333-2504</a>

$I_n$ [A]	$L_n$ [mH]	$R_{Cu}$ [mΩ]	Power <sub>loss</sub> [W]	$f_{RES}$ [MHz]	Copper ø [mm]	Weight [g]	Housings	Packing unit [pcs.]	Order Number
36	2	7.6	29.5	0.25	2.36	1831 g	33-3W	1	DKIP-0333-3602
50	1	4	30	0.5	1.5 x 4.5	1864 g	33-3W	1	DKIP-0333-5001

Availability for all products can be searched real-time:<http://www.schurter.com/en/Stock-Check/Stock-Check-SCHURTER>