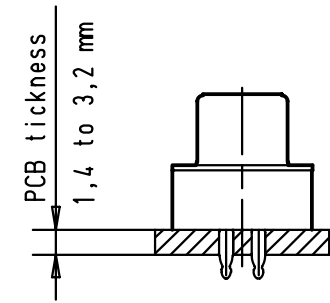
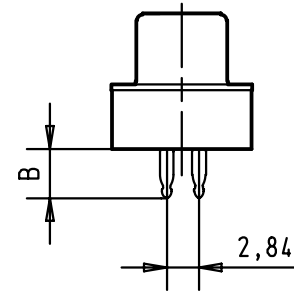
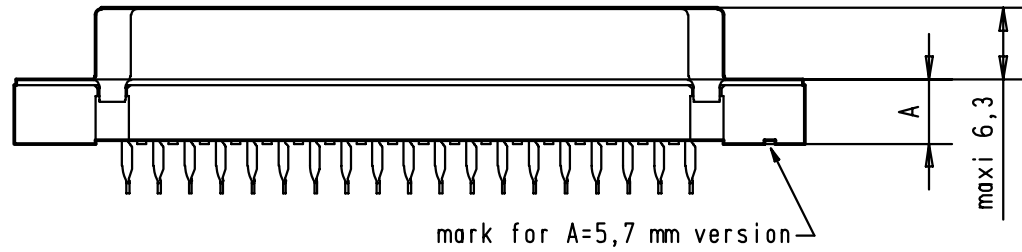
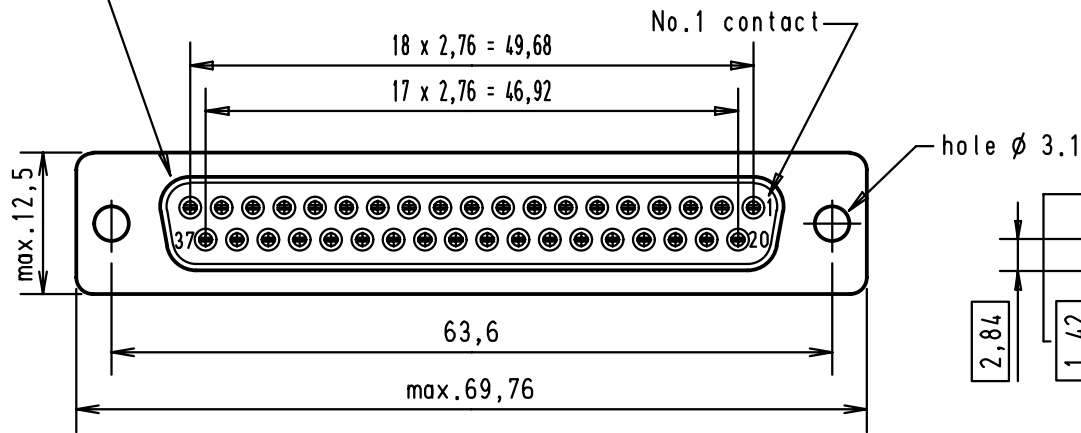


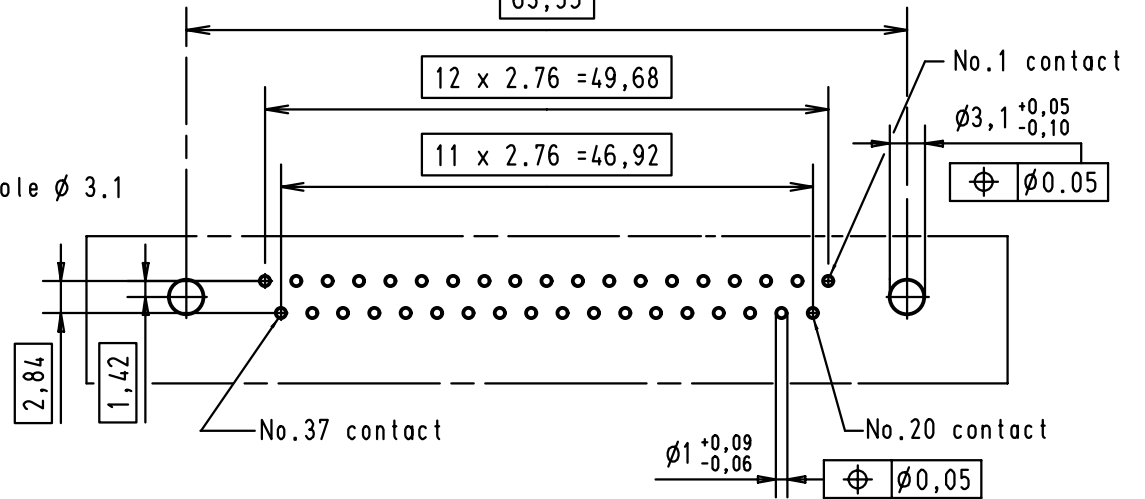
5 4 3 2 1



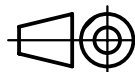

Mating face according to : MIL-C-24308 / DIN 41652 / CECC 75301-802



63,55



PCB layout hole component side ( PCB holes plating : Tin )

A	09664147500	3	6	4.20							 All Dim. in mm Orig. Size DIN A 3	D-Sub 37 poles straight female connector with press-in termination, version $\phi$ 3.1 hole.	Maßstab/ Scale 2,5:1		
	09664146500	2	6	4.20						Detail.				30/06/95	jfb
	09664145500	0.76 $\mu$ m Au	6	4.20						Insp.					
	09664147504	3	5.7	4.35						Stand.					
	09664146504	2	5.7	4.35	27980	05/03/01	jfb								
	09664145504	0.76 $\mu$ m Au	5.7	4.35	16236	30/06/95	jfb								
	Part number	Performance level	A $\pm$ 0.2	B $\pm$ 0.2	Mod.	Dat.	Name	HARTING EURL F-95972 Paris				TB 0966414x50x Sub.	Blatt/ Page 1		