

PCB terminal block - FRONT 2,5-V/SA 5 - 1700037

Please be informed that the data shown in this PDF Document is generated from our Online Catalog. Please find the complete data in the user's documentation. Our General Terms of Use for Downloads are valid (<http://download.phoenixcontact.com>)



PC terminal block, Nominal current: 24 A, Nom. voltage: 400 V, Pitch: 5 mm, Number of positions: 1, Connection method: Screw connection, Mounting: Soldering, Conductor/PCB connection direction: 90 °, Color: green, The article can be aligned to create different nos. of positions!



Key commercial data

| | |
|------------------------|---------------------|
| Packing unit | 1 |
| Minimum order quantity | 50 |
| Catalog page | Page 113 (CC-2007) |
| GTIN | 4 017918 022723 |
| Custom tariff number | 85369010 |
| Country of origin | GERMANY |

Technical data

Dimensions / positions

| | |
|------------------------|--------------|
| Length | 18.5 mm |
| Pitch | 5 mm |
| Number of positions | 1 |
| Pin dimensions | 0,8 x 0,8 mm |
| Pin spacing | 5 mm |
| Hole diameter | 1.2 mm |
| Screw thread | M2,5 |
| Tightening torque, min | 0.4 Nm |
| Tightening torque max | 0.5 Nm |

Technical data

| | |
|-----------------------------|------------------|
| Range of articles | FRONT 2,5-V/SA 5 |
| Insulating material group | I |
| Rated surge voltage (III/3) | 4 kV |
| Rated surge voltage (III/2) | 4 kV |
| Rated surge voltage (II/2) | 4 kV |
| Rated voltage (III/3) | 250 V |
| Rated voltage (III/2) | 400 V |

PCB terminal block - FRONT 2,5-V/SA 5 - 1700037

Technical data

Technical data

| | |
|---|---------------------|
| Rated voltage (II/2) | 630 V |
| Connection in acc. with standard | EN-VDE |
| Nominal current I_N | 24 A |
| Nominal cross section | 2.5 mm ² |
| Maximum load current | 17.5 A |
| Insulating material | PA |
| Inflammability class according to UL 94 | V0 |
| Internal cylindrical gage | A3 |
| Stripping length | 9 mm |
| Nominal voltage, UL/CUL Use Group B | 250 V |
| Nominal current, UL/CUL Use Group B | 10 A |
| Nominal voltage, UL/CUL Use Group C | 300 V |
| Nominal current, UL/CUL Use Group C | 17 A |
| Nominal voltage, UL/CUL Use Group D | 300 V |
| Nominal current, UL/CUL Use Group D | 10 A |

Connection data

| | |
|---|----------------------|
| Conductor cross section solid min. | 0.2 mm ² |
| Conductor cross section solid max. | 2.5 mm ² |
| Conductor cross section stranded min. | 0.2 mm ² |
| Conductor cross section stranded max. | 2.5 mm ² |
| Conductor cross section stranded, with ferrule without plastic sleeve min. | 0.25 mm ² |
| Conductor cross section stranded, with ferrule without plastic sleeve max. | 1.5 mm ² |
| Conductor cross section stranded, with ferrule with plastic sleeve min. | 0.25 mm ² |
| Conductor cross section stranded, with ferrule with plastic sleeve max. | 1.5 mm ² |
| Conductor cross section AWG/kcmil min. | 24 |
| Conductor cross section AWG/kcmil max | 14 |
| 2 conductors with same cross section, solid min. | 0.2 mm ² |
| 2 conductors with same cross section, solid max. | 0.75 mm ² |
| 2 conductors with same cross section, stranded min. | 0.2 mm ² |
| 2 conductors with same cross section, stranded max. | 0.75 mm ² |
| 2 conductors with same cross section, stranded, ferrules without plastic sleeve, min. | 0.25 mm ² |
| 2 conductors with same cross section, stranded, ferrules without plastic sleeve, max. | 0.34 mm ² |
| Minimum AWG according to UL/CUL | 30 |
| Maximum AWG according to UL/CUL | 12 |

PCB terminal block - FRONT 2,5-V/SA 5 - 1700037

Classifications

ETIM

| | |
|----------|----------|
| ETIM 3.0 | EC001121 |
| ETIM 4.0 | EC002643 |
| ETIM 5.0 | EC002643 |

UNSPSC

| | |
|---------------|----------|
| UNSPSC 11 | 39121432 |
| UNSPSC 12.01 | 39121432 |
| UNSPSC 13.2 | 39121432 |
| UNSPSC 6.01 | 30211801 |
| UNSPSC 7.0901 | 39121432 |

eCl@ss

| | |
|------------|----------|
| eCl@ss 4.0 | 27141109 |
| eCl@ss 4.1 | 27141109 |
| eCl@ss 5.0 | 27141190 |
| eCl@ss 5.1 | 27141190 |
| eCl@ss 6.0 | 27261101 |
| eCl@ss 7.0 | 27440401 |

Approvals

Approvals


Approvals

CSA / UL Recognized / cUL Recognized / GOST / GL / RS / GOST / cULus Recognized

Ex Approvals

Approvals submitted

Approval details

| | | |
|---|-------|-------|
|  | | |
| | B | D |
| mm ² /AWG/kcmil | 24-12 | 24-12 |
| Nominal current I _N | 10 A | 10 A |
| Nominal voltage U _N | 300 V | 300 V |

PCB terminal block - FRONT 2,5-V/SA 5 - 1700037

Approvals

UL Recognized

| | | B | C | D |
|----------------------------|-------|-------|-------|---|
| mm ² /AWG/kcmil | 30-12 | 30-12 | 30-12 | |
| Nominal current IN | 10 A | 17 A | 10 A | |
| Nominal voltage UN | 250 V | 300 V | 300 V | |

cUL Recognized

| | | B | C | D |
|----------------------------|-------|-------|-------|---|
| mm ² /AWG/kcmil | 30-12 | 30-12 | 30-12 | |
| Nominal current IN | 10 A | 17 A | 10 A | |
| Nominal voltage UN | 250 V | 300 V | 300 V | |

GOST

GL

RS

GOST

cULus Recognized

Accessories

Accessories

Assembly

PCB terminal block - D-FRONT 2,5-V-O.Z. - 1700011



End cover, necessary at the end of a terminal row, 2.5 mm thick, color: green

PCB terminal block - FRONT 2,5-V/SA 5 - 1700037

Accessories

PCB terminal block - RZ 2,5-FRONT 2,5 V - 1700082



Pitch spacer, raises the pitch by 2.5 mm, interlocks with terminal block of the same shape, color: green

Marking

Marker cards - SK 5/3,8:FORTL.ZAHLEN - 0804183



Marker cards, Card, white, labeled, Horizontal: Consecutive numbers 1 - 10, 11 - 20, etc. up to 91 - (99)100, Mounting type: Adhesive, For terminal block width: 5 mm

Tools

Screwdriver - SZS 0,6X3,5 - 1205053



Actuation tool, for ST terminal blocks, insulated, also suitable for use as a bladed screwdriver, size: 0.6 x 3.5 x 100 mm, 2-component grip, with non-slip grip

Insertion bridge - EBP 2- 5 - 1733169



Insertion bridge, fully insulated, for plug connectors with 5.0 or 5.08 mm pitch, no. of positions: 2

Additional products

PCB terminal block - D-FRONT 2,5-V-O.Z. - 1700011

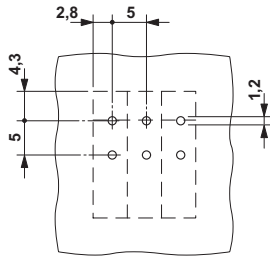


End cover, necessary at the end of a terminal row, 2.5 mm thick, color: green

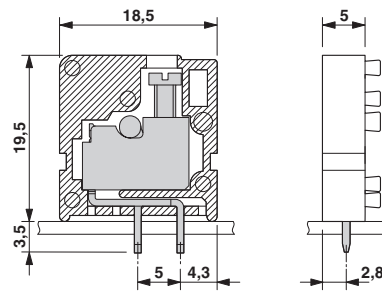
Drawings

PCB terminal block - FRONT 2,5-V/SA 5 - 1700037

Drilling diagram



Dimensioned drawing



© Phoenix Contact 2012 - all rights reserved
<http://www.phoenixcontact.com>