

THIS DRAWING IS UNPUBLISHED. RELEASED FOR PUBLICATION.

BY TYCO ELECTRONICS CORPORATION. ALL RIGHTS RESERVED.

ATLANTIC VERSION TERMINATOR INTERFACE ADAPTER	PART NUMBER	REVISION	DESCRIPTION	FEED TYPE	CONVERT TO	PART NUMBERS REQUIRED					
	2151962-1	E	FINE CRIMP HEIGHT ADJUST	MECHANICAL	PNEUMATIC FEED	2119950-1	1338685-1	5-18022-5	2119641-1	2119799-1	2063440-1
	2151962-2	E	FINE CRIMP HEIGHT ADJUST	PNEUMATIC	SERVO LATCH PLATE	2119951-1	-	8-2151962-5	1901094-3	1-1752354-9	2168400-6 (QUANTITY 2)
					SMART APPLICATOR	2161326-1	-	8-2151962-4	-	-	
					MECHANICAL FEED	2119949-1	1338685-1	5-18022-5	2119653-1	-	
	2151962-5	E	FINE CRIMP HEIGHT ADJUST	SERVO LATCH PLATE	SERVO LATCH PLATE	2119951-1	-	8-2151962-5	1901094-3	1-1752354-9	2168400-6 (QUANTITY 2)
					SMART APPLICATOR	2161326-1	-	8-2151962-4	-	-	
					MECHANICAL FEED	2119949-1	1338685-1	5-18022-5	2119653-1	-	
2151962-6	E	NON-CRIMP HEIGHT ADJUST	SERVO LATCH PLATE	-	-	-	-	-	-	-	
2151962-7	E	FINE CRIMP HEIGHT ADJUST	NONE	-	-	-	-	-	-	-	
7-2151962-7	D	CRIMP TOOLING KIT	-	-	-	-	-	-	-	-	

APPLICATOR DATA		
CRIMP WIRE	SIZE	TYPE
WIRE	2.03 mm [.080]	F
INSUL	3.18 mm [.125]	O

APPLICATOR INSTRUCTIONS 408-10389

TERMINAL DATA: TE TERMINAL	TE CRIMP SPECIFICATION
TERMINAL NAME: PIN CONTACT W/W	
WIRE STRIP LENGTH 4.98-5.08 mm [.196-.200 IN]	INSULATION DIAMETER RANGE Ø1.27-2.72 mm [.050-.107 IN]
TERMINAL APPLICATION SPECIFICATION 114-13045	
TERMINALS APPLIED	
TE TERMINAL	TE TERMINAL
1924463-1	1924463-2
1924464-2	1924463-3
	1924464-1

TERMINAL DATA: TE TERMINAL	TE CRIMP SPECIFICATION
TERMINAL NAME: PIN CONTACT W/W	
WIRE STRIP LENGTH 4.98-5.08 mm [.196-.200 IN]	INSULATION DIAMETER RANGE Ø1.27-2.72 mm [.050-.107 IN]
TERMINAL APPLICATION SPECIFICATION 114-13045	
TERMINALS APPLIED	
TE TERMINAL	TE TERMINAL
1924463-1	1924463-2
1924464-2	1924463-3
	1924464-1

WIRE SIZE	CRIMP HEIGHT mm [INCH]	CRIMP HEIGHT REFERENCE SETTING
18 AWG	1.29 +/- 0.05 [.051 +/- .002]	6.2
20 AWG	1.22 +/- 0.05 [.048 +/- .002]	6.9

WIRE SIZE	CRIMP HEIGHT mm [INCH]	CRIMP HEIGHT REFERENCE SETTING
1.00mm2	1.32 +/- 0.05 [.052 +/- .002]	6.2
0.75mm2	1.22 +/- 0.05 [.048 +/- .002]	6.9

- RECOMMENDED SPARE PARTS
- GREASE BEARING SURFACES LIGHTLY
- LUBRICATE DAILY PER THE APPLICATOR INSTRUCTION SHEET SUPPLIED WITH THE APPLICATOR.
- APPLICATOR SPECIFIC DATA TO BE ENTERED INTO BLANK MEMORY CHIP AT ASSEMBLY. SEE BELOW FOR PART NUMBER:
  - MECHANICAL FEED WITH "SMART APPLICATOR" CONVERSION: 8-2151962-4
  - PNEUMATIC FEED WITH "SMART APPLICATOR" CONVERSION: 8-2151962-4
  - SERVO FEED WITH "FINE CRIMP HEIGHT ADJUST": 8-2151962-5
  - SERVO FEED WITH "NON-CRIMP HEIGHT ADJUST": 8-2151962-6
- ADJUSTMENT OF THE STRIPPER MAY BE REQUIRED WHEN MOVING THE APPLICATOR BETWEEN BENCH AND LEADMAKER APPLICATIONS.
- APPLY PART NUMBER 1-23419-5 LOCTITE TO THREADS OF ITEMS 62,180. APPLY PART NUMBER 2-23419-6 LOCTITE TO THREADS OF ITEMS 242. FOR -6 ONLY APPLY PART NUMBER 1-23419-5 LOCTITE TO THREADS OF ITEM 37.
- GREASE THREADS, GROOVE AND O-RING ON ITEMS 35 & 252.
- MAGNET, ITEM 166 MUST BE ORIENTED CORRECTLY IN ORDER TO PROPERLY ACTUATE THE COUNTER.
- CRIMP HEIGHT REFERENCE SETTING WAS THE SETTING USED WHEN THE APPLICATOR WAS QUALIFIED AT THE FACTORY. ADJUSTMENT MAY BE NECESSARY WHEN RUNNING APPLICATOR IN THE FIELD.
- SPARE FEED CAM STORAGE LOCATION REFER TO INSTRUCTION SHEET FOR ADDITIONAL INFORMATION.
- TO CONVERT THE APPLICATOR TO A NON-CARRIER CUTTING STYLE, REMOVE ITEM 13 AND ATTACH TO THE LOCATION ON THE BACK SIDE OF THE HOUSING. REFER TO INSTRUCTION SHEET FOR ADDITIONAL INFORMATION.
- WHEN ASSEMBLING A NON CRIMP HEIGHT ADJUST APPLICATOR (-6) USE SHIMS FROM ITEM 260 TO ACHIEVE A NOMINAL SHIM HEIGHT OF 4.51.
- TERMINAL LUBRICANT IS RECOMMENDED.

**\*WARNING**  
ON INSTALLATION, SET WIRE DISC, ITEM 40 TO LARGEST WIRE SIZE SETTING. USE OF SETTINGS BELOW MINIMUM REQUIRED CRIMP HEIGHT SETTING WILL CAUSE DAMAGE TO CRIMP TOOLING.

CONVERT TO	PART NUMBERS REQUIRED	ITEM NO
- 1 - - -	2119957-2	260
- 1 - 1 1 1	8-21084-0	252
- - - - 1 -	2119640-1	250
- - - - 1 -	1803259-1	249
- - - - 1 -	2119641-1	248
- 1 - 1 1 1	2119798-1	247
- 1 - 1 1 1	1-22279-3	246
-77 -7 -6 -5 -2 -1	PART NO	DESCRIPTION

**ATLANTIC VERSION**  
Shown on sheets 1 of 4 & 2 of 4  
(Pacific version shown on sheets 3 of 4 & 4 of 4)

SET UP GAUGE	LOC	DIST	REVISIONS			
2119599-1	A	66	REV	DATE	BY	APPV
			D2	ECR-15-016905	18NOV2015	MR JDG
			E	ECR-17-002605	22FEB2017	TB TE

REV	DATE	BY	APPV	DESCRIPTION	ITEM NO	
- - 1 - - -				2119758-1	RAM, AMP STYLE, SIDE FEED, NON-ADJ.	245
- 1 1 1 1 1				2119082-9	CAM, SNAIL, INSULATION ADJUSTMENT	244
- 1 1 1 1 1				2079764-1	WASHER, WAVE SPRING, CREST-TO-CREST	243
- 1 1 1 1 1				2119083-1	RETAINER, INSULATION DIAL	242
- 1 1 1 1 1				7-18023-7	SCR, SKT HD CAP M3 X 4.0	241
- - 2 2 - -				2168400-6	SHCS, LOW HEAD, RoHS, M5 X 16	240
- - - - - 1				2119580-1	MECHANICAL FEED ASSEMBLY	239
- - - - - 1				2063440-1	AIR FEED MODULE	238
- - 1 1 - -				2119740-2	TAG, IDENTIFICATION	213
- - 1 1 - -				1901094-3	SPACER, FEEDER	198
- 1 1 1 1 1				1-1752354-9	STANDOFF, HOLD-DOWN	180
- 1 1 1 1 1				9931111-1	PIN, SLOTTED SPRING 3.0 X 20.0	177
- 1 1 1 1 1				8-22280-7	SPRING, COMPRESSION	176
- 1 1 1 1 1				1752353-2	GUIDE PIN, HOLDDOWN	175
- 1 1 1 1 1				1901680-2	GUIDE PIN, HOLDDOWN	174
- - - - - 2				21045-3	RING, RETAIN, EXTERN, 3/16 CRESCENT	172
- 1 1 1 1 1				994969-1	MAGNET, RARE EARTH HIGH ENERGY	166
- REF REF REF REF REF				994970-2	COUNTER, MAGNETIC	164
- - - - - 1				240638-1	SPRING, FEED FINGER	163
- - - - - 1				3-23627-7	PIN, RETAIN, GRVD, 3/16 X .854	137
- - - - - 1				2119799-1	HOLDER, FEED FINGER, AF	136
- - REF REF - -				SEE NOTE 4	MEMORY CHIP, PROGRAMMED	135
- - 1 1 - -				1633743-1	SERVO FEED LATCH ASM	133
- 1 1 1 1 1				1-18028-2	WASHER, FLAT, REG M4	119
- - REF REF - -				2119944-1	FEED FINGER ASSEMBLY, SF	117
- 1 1 1 1 1				2119955-1	ASSY, LUBRICATOR, SIDE FEED	113
- 1 1 1 1 1				455888-5	SPACER, CRIMPER	82
- 1 1 1 1 1				2119956-1	DOCUMENTATION PACKAGE	71
- 1 1 1 1 1				2119791-9	DEPRESSOR, WIRE	70
- 1 - - - 1 1				2119740-1	TAG, IDENTIFICATION	67
- 2 2 2 2 2				2168078-1	SCREW, DRIVE, RH, RoHS, 2 x .188	66
- 1 - 1 1 1 1				2119793-1	LIMITER, ADJUSTMENT BOLT	63
- 3 - 3 3 3				992763-5	SCR, SET, SOC, CONE POINT, M3 X 4.0	62
- 1 1 1 1 1				2079383-4	SCR, BHSC, RoHS (M4 X 8)	60
- - - - - 1 1				5-18022-5	SCR, HEX HD CAP, M4 X 6.0	59
- - - - - 1 1				1338685-1	PAWL, FEED	56
- 4 4 4 4 4				2168400-1	SHCS, LOW HEAD, RoHS, M4 X 12	54
- 1 1 1 1 1				1-5018030-0	NUT, HEX, REG, RoHS, M3.5	52
- 1 1 1 1 1				1901681-1	HOLDDOWN, TERMINAL	51
- - - - - 1 2				18023-9	SCR, SKT HD CAP M4 X 6.0	49
- - - - - - 1				2119652-1	FEED CAM, PRE FEED	48
- - - - - - 1				2119653-1	FEED CAM, POST FEED	47
- 1 1 1 1 1				2119656-9	APPLICATOR BASIC ASSEMBLY, SF	46
- 1 - 1 1 1 1				2119370-1	RAM, AMP STYLE, SIDE FEED	44
- 1 1 1 1 1				2079383-7	SCR, BHSC, RoHS (M8 X 25)	41
- 1 - 1 1 1 1				2119645-1	DISC, NUMBERED FA WIRE ADJUSTMENT	40
- 1 - 1 1 1 1				2119957-1	APPLICATOR SHIM PACK	39
- 1 1 1 1 1				2119644-1	RAM WASHER, PRECISION	38
- 1 1 1 1 1				2119085-1	FA HEAD, ATLANTIC STYLE	37
- 1 - 1 1 1 1				2119092-1	BOLT, ADJUSTMENT	35
- 1 1 1 1 1				3-1752356-3	SUPPORT, TERMINAL	34
- 2 2 2 2 2				2079383-5	SCR, BHSC, RoHS (M4 X 20)	33
- 1 1 1 1 1				2161328-1	HEX HEAD, FLANGED, M5 X 8mm LONG	32
- 1 1 1 1 1				1320908-1	SPACER, STRIP GUIDE	30
- 1 1 1 1 1				2119959-1	ASSEMBLY, STRIP GUIDE	29
- 1 1 1 1 1				455888-1	SPACER, CRIMPER	28
- 1 1 1 1 1				1320928-1	STRIP GUIDE	24
- 1 1 1 1 1				2168083-2	SCR, SKT HD CAP, RoHS, M4 X 8.0	21
- 1 1 1 1 1				1-18028-2	WASHER, FLAT, REG M4	20
- 1 1 1 1 1				2119533-1	STRIPPER, SIDE FEED	19
- 1 1 1 1 1				2119806-1	INSERT, SHEAR	13
- 1 1 1 1 1				3-22280-3	SPRING, COMPRESSION	12
- 1 1 1 1 1				1-356885-4	STOP, SHEAR	11
- 1 1 1 1 1				2119805-1	SHEAR HOLDER, FRONT	10
- 1 1 1 1 1				1803095-3	FLOATING SHEAR, FRONT	9
1 1 1 1 1 1				9-1633131-1	ANVIL, COMBINATION .080	8
- - - - - - -				-	-	7
- - - - - - -				-	-	6
- 1 1 1 1 1 1				2119757-8	DEPRESSOR, SHEAR	5
- 1 1 1 1 1 1				3-238011-5	BLOCK, CRIMPER SPACER	4
1 1 1 1 1 1 1				4-1633966-7	CRIMPER, INSULATION O	3
- 1 1 1 1 1 1				455888-5	SPACER, CRIMPER	2
1 1 1 1 1 1 1				5-456405-3	CRIMPER, WIRE PREMIUM	1
-77 -7 -6 -5 -2 -1	PART NO	DESCRIPTION	ITEM NO			

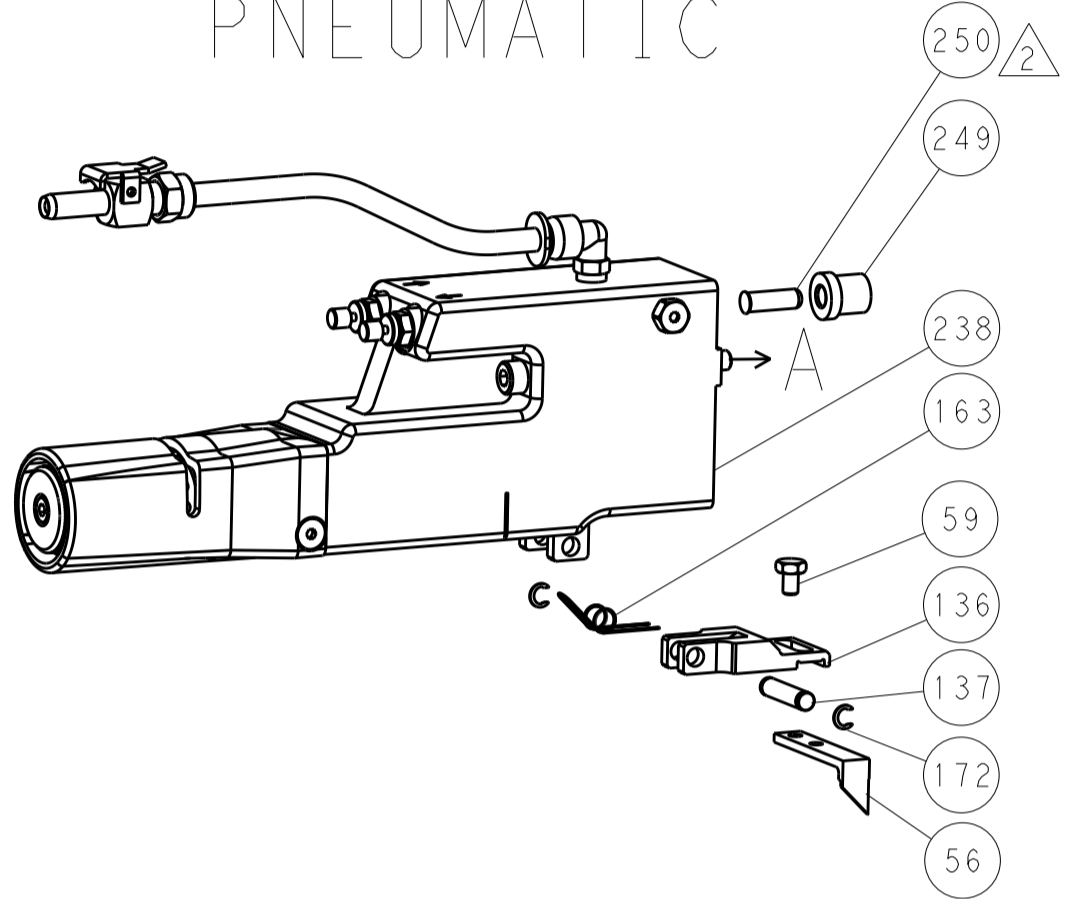
DIMENSIONS: mm 		TOLERANCES UNLESS OTHERWISE SPECIFIED: 0 PLC ± 1 PLC ± 2 PLC ± 3 PLC ± 4 PLC ± ANGLES ±		DWN C. CHEN 20MAY2013 CHK U. GUO ZOMAY2013 APVD J. CRUZ ZOMAY2013	TE Connectivity Harrisburg, PA 17105-3608
MATERIAL: FINISH:		WEIGHT: SCALE: 1:2		NAME Ocean Side Feed Applicator	
CUSTOMER ACCESSIBLE PRODUCTION DRAWING		SHEET 1 OF 4		REV E	

LOC	DIST	REV	DATE	BY	APPV
A	66				

### FEED TYPE MECHANICAL



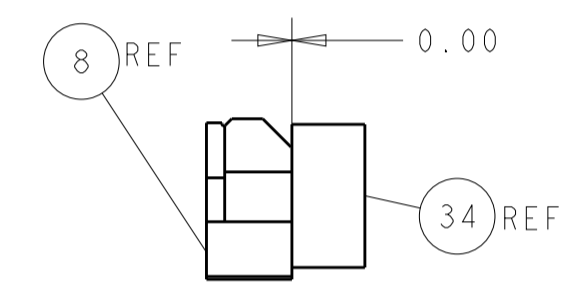
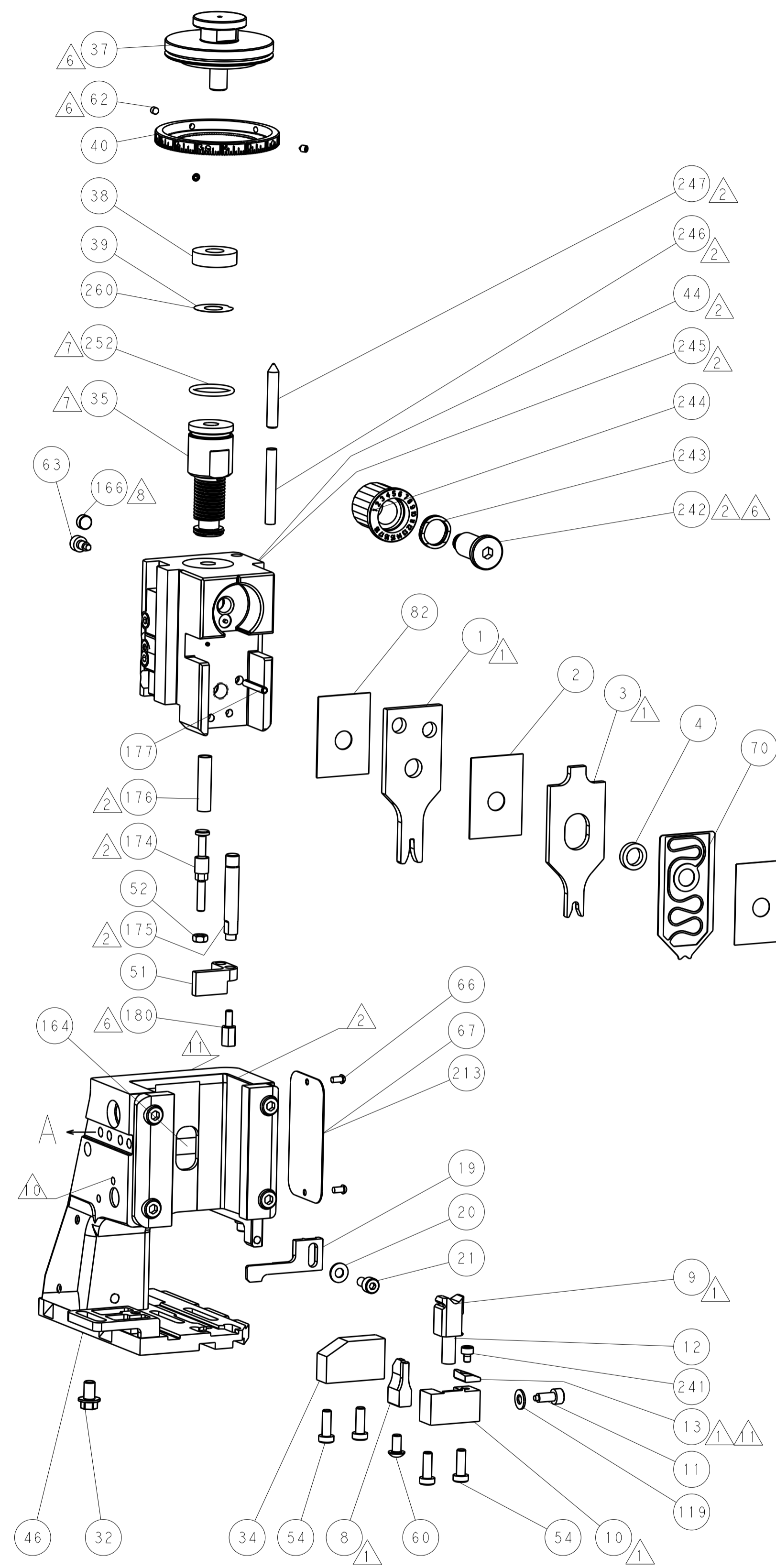
### PNEUMATIC



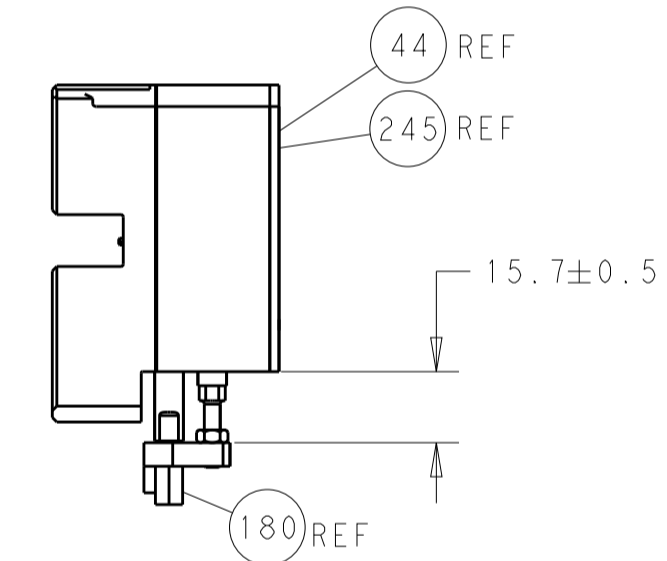
### SERVO LATCH PLATE



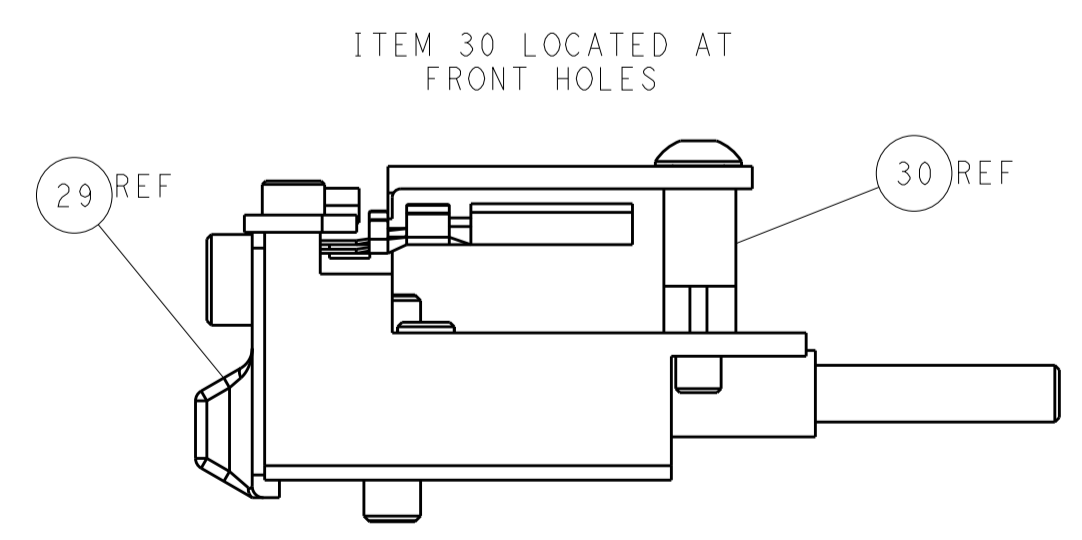
### CAM POSITIONS



TERMINAL SUPPORT LOCATION



HOLDDOWN SET-UP



ITEM 30 LOCATED AT FRONT HOLES

FEED TRACK POSITION GUIDE BY INSULATION BARREL

**ATLANTIC VERSION**  
 Shown on sheets 1 of 4 & 2 of 4  
 (Pacific version shown on sheets 3 of 4 & 4 of 4)

DIMENSIONS: mm 		TOLERANCES UNLESS OTHERWISE SPECIFIED: 0 PLC ± 1 PLC ± 2 PLC ± 3 PLC ± 4 PLC ± ANGLES ±		DWN: C. CHEN CHK: U. GUO APVD: J. CRUZ PRODUCT SPEC: APPLICATION SPEC: WEIGHT: Customer Accessible Production Drawing		ZOMAY2013 ZOMAY2013 ZOMAY2013 NAME: Ocean Side Feed Applicator SIZE: A1 CAGE CODE: 00779 DRAWING NO: 2151962 SCALE: 1:2 SHEET: 2 of 4 REV: E		TE Connectivity Harrisburg, PA 17105-3608 RESTRICTED TO	
-----------------------	--	---	--	---	--	---	--	---	--

PACIFIC VERSION TERMINATOR INTERFACE ADAPTER	PART NUMBER	REVISION	DESCRIPTION	FEED TYPE	APPLICATOR STYLE CONVERSION CHART						
					CONVERT TO	PART NUMBERS REQUIRED					
	2-2151962-1	E	FINE CRIMP HEIGHT ADJUST	MECHANICAL	PNEUMATIC FEED	2119950-1	1338685-1	5-18022-5	2119641-2	2119799-1	2063440-1
					SERVO LATCH PLATE	2119951-1	-	8-2151962-5	1901094-3	1-1752354-9	2168400-6 (QUANTITY 2)
					SMART APPLICATOR	2161326-1	-	8-2151962-4	-	-	-
	2-2151962-2	E	FINE CRIMP HEIGHT ADJUST	PNEUMATIC	MECHANICAL FEED	2119949-1	1338685-1	5-18022-5	2119653-2	-	-
					SERVO LATCH PLATE	2119951-1	-	8-2151962-5	1901094-3	1-1752354-9	2168400-6 (QUANTITY 2)
					SMART APPLICATOR	2161326-1	-	8-2151962-4	-	-	-
2-2151962-5	E	FINE CRIMP HEIGHT ADJUST	SERVO LATCH PLATE <sup>4</sup>	MECHANICAL FEED	2119949-1	1338685-1	5-18022-5	2119653-2	-	-	
				PNEUMATIC FEED	2119950-1	1338685-1	5-18022-5	2119641-2	2119799-1	2063440-1	
2-2151962-7	E	FINE CRIMP HEIGHT ADJUST	NONE	-	-	-	-	-	-	-	
7-2151962-7	D	CRIMP TOOLING KIT	-	-	-	-	-	-	-	-	

APPLICATOR DATA		
CRIMP	SIZE	TYPE
WIRE	2.03 mm [.080]	F
INSUL	3.18 mm [.125]	O
APPLICATOR INSTRUCTIONS 408-10389		

TERMINAL DATA: TE TERMINAL		TE CRIMP SPECIFICATION	
TERMINAL NAME: PIN CONTACT W/W			
WIRE STRIP LENGTH		INSULATION DIAMETER RANGE	
4.98-5.08 mm [.196-.200 IN]		Ø1.27-2.72 mm [.050-.107 IN]	
TERMINAL APPLICATION SPECIFICATION	114-13045	-	-
TERMINALS APPLIED <sup>12</sup>			
TE TERMINAL	TE TERMINAL	TE TERMINAL	TE TERMINAL
1924463-1	1924463-2	1924463-3	1924464-1
1924464-2			

TERMINAL DATA: TE TERMINAL		TE CRIMP SPECIFICATION	
TERMINAL NAME: PIN CONTACT W/W			
WIRE STRIP LENGTH		INSULATION DIAMETER RANGE	
4.98-5.08 mm [.196-.200 IN]		Ø1.27-2.72 mm [.050-.107 IN]	
TERMINAL APPLICATION SPECIFICATION	114-13045	-	-
TERMINALS APPLIED <sup>12</sup>			
TE TERMINAL	TE TERMINAL	TE TERMINAL	TE TERMINAL
1924463-1	1924463-2	1924463-3	1924464-1
1924464-2			

WIRE SIZE	CRIMP HEIGHT mm [INCH]	CRIMP HEIGHT REFERENCE SETTING
18 AWG	1.29+/-0.05 [.051+/- .002]	6.2
20 AWG	1.22+/-0.05 [.048+/- .002]	6.9

WIRE SIZE	CRIMP HEIGHT mm [INCH]	CRIMP HEIGHT REFERENCE SETTING
1.00mm2	1.32+/-0.05 [.052+/- .002]	6.2
0.75mm2	1.22+/-0.05 [.048+/- .002]	6.9

- RECOMMENDED SPARE PARTS
- GREASE BEARING SURFACES LIGHTLY
- 3. LUBRICATE DAILY PER THE APPLICATOR INSTRUCTION SHEET SUPPLIED WITH THE APPLICATOR.
- APPLICATOR SPECIFIC DATA TO BE ENTERED INTO BLANK MEMORY CHIP AT ASSEMBLY. SEE BELOW FOR PART NUMBER:  
 MECHANICAL FEED WITH "SMART APPLICATOR" CONVERSION: 8-2151962-4  
 PNEUMATIC FEED WITH "SMART APPLICATOR" CONVERSION: 8-2151962-4  
 SERVO FEED WITH "FINE CRIMP HEIGHT ADJUST": 8-2151962-5
- 5. ADJUSTMENT OF THE STRIPPER MAY BE REQUIRED WHEN MOVING THE APPLICATOR BETWEEN BENCH AND LEADMAKER APPLICATIONS.
- APPLY PART NUMBER 1-23419-5 LOCTITE TO THREADS OF ITEMS 62,180  
 APPLY PART NUMBER 2-23419-6 LOCTITE TO THREADS OF ITEMS 242.
- GREASE THREADS, GROOVE AND O-RING ON ITEMS 139 & 152.
- MAGNET MUST BE ORIENTED CORRECTLY IN ORDER TO PROPERLY ACTUATE THE COUNTER.
- CRIMP HEIGHT REFERENCE SETTING WAS THE SETTING USED WHEN THE APPLICATOR WAS QUALIFIED AT THE FACTORY. ADJUSTMENT MAY BE NECESSARY WHEN RUNNING APPLICATOR IN THE FIELD.
- SPARE FEED CAM STORAGE LOCATION REFER TO INSTRUCTION SHEET FOR ADDITIONAL INFORMATION.
- TO CONVERT THE APPLICATOR TO A NON-CARRIER CUTTING STYLE, REMOVE ITEM 13 AND ATTACH TO THE LOCATION ON BACK SIDE OF THE HOUSING. REFER TO INSTRUCTION SHEET FOR ADDITIONAL INFORMATION.
- TERMINAL LUBRICANT IS RECOMMENDED.

\*WARNING  
 ON INSTALLATION, SET WIRE DISC, ITEM 40 TO LARGEST WIRE SIZE SETTING. USE OF SETTINGS BELOW MINIMUM REQUIRED CRIMP HEIGHT SETTING WILL CAUSE DAMAGE TO CRIMP TOOLING.

-	1	1	1	1	2119782-1	FINE ADJUST HEAD ASM, PACIFIC STYLE	251
-	-	-	1	-	2119640-1	PUSH ROD, AIR FEED	250
-	-	-	1	-	1803259-1	BUSHING, FLANGED	249
-	1	1	1	1	1-22279-3	SPRING, COMPRESSION	246
-	1	1	1	1	2119082-9	CAM, SNAIL, INSULATION ADJUSTMENT	244
-77	-27	-25	-22	-21	PART NO	DESCRIPTION	ITEM NO

PACIFIC VERSION  
 Shown on sheets 3 of 4 & 4 of 4  
 (Atlantic version shown on sheets 1 of 4 & 2 of 4)

SET UP GAUGE	LOC	DIST	REVISIONS					
2119599-1	A	66	P	LTN	DESCRIPTION	DATE	OWN	APVD
-	-	-	-	-	SEE SHEET 1	-	-	-

-	1	1	1	1	2079764-1	WASHER, WAVE SPRING, CREST-TO-CREST	243
-	1	1	1	1	2119083-1	RETAINER, INSULATION DIAL	242
-	1	1	1	1	7-18023-7	SCR, SKT HD CAP M3 X 4.0	241
-	-	2	-	-	2168400-6	SHCS, LOW HEAD, RoHS, M5 X 16	240
-	-	-	-	1	2119580-1	MECHANICAL FEED ASSEMBLY	239
-	-	-	-	1	2063440-1	AIR FEED MODULE	238
-	-	1	-	-	2119740-2	TAG, IDENTIFICATION	213
-	-	1	-	-	1901094-3	SPACER, FEEDER	198
-	1	1	1	1	1-1752354-9	STANDOFF, HOLD-DOWN	180
-	1	1	1	1	993111-1	PIN, SLOTTED SPRING 3.0 X 20.0	177
-	1	1	1	1	8-22280-7	SPRING, COMPRESSION	176
-	1	1	1	1	1752353-2	GUIDE PIN, HOLDDOWN	175
-	1	1	1	1	1901680-2	GUIDE PIN, HOLDDOWN	174
-	-	-	2	-	21045-3	RING, RETAIN, EXTERN, 3/16 CRESCENT	172
-	1	1	1	1	994969-1	MAGNET, RARE EARTH HIGH ENERGY	166
-	REF	REF	REF	REF	994970-2	COUNTER, MAGNETIC	164
-	-	-	1	-	240638-1	SPRING, FEED FINGER	163
-	1	1	1	1	8-21084-1	O-RING, .801 ID, .070 DIA, MAT.	152
-	-	-	1	-	2119641-2	FEED CAM, AIR FEED	151
-	1	1	1	1	2119798-2	DETENT PIN	145
-	1	1	1	1	2079383-8	SCR, BHSC, RoHS (M4 X 16)	144
-	4	4	4	4	2168400-5	SHCS, LOW HEAD, RoHS, M4 X 20	143
-	-	-	-	1	2119653-2	FEED CAM, POST FEED	142
-	1	1	1	1	1-2119656-0	APPLICATOR BASIC ASSEMBLY, SF	141
-	1	1	1	1	2119650-1	RAM, ASIAN STYLE, SIDE FEED	140
-	1	1	1	1	2119092-2	BOLT, ADJUSTMENT	139
-	-	-	1	-	3-23627-7	PIN, RETAIN, GRVD, 3/16 X .854	137
-	-	-	1	-	2119799-1	HOLDER, FEED FINGER, AF	136
-	-	REF	-	-	SEE NOTE 4	MEMORY CHIP, PROGRAMMED	135
-	-	1	-	-	1633743-1	SERVO FEED LATCH ASM	133
-	1	1	1	1	1-18028-2	WASHER, FLAT, REG M4	119
-	-	REF	-	-	2119944-1	FEED FINGER ASSEMBLY, SF	117
-	1	1	1	1	2119955-1	ASSY, LUBRICATOR, SIDE FEED	113
-	1	1	1	1	455888-5	SPACER, CRIMPER	82
-	1	1	1	1	2119956-1	DOCUMENTATION PACKAGE	71
-	1	1	1	1	2119791-9	DEPRESSOR, WIRE	70
-	1	-	1	1	2119740-1	TAG, IDENTIFICATION	67
-	2	2	2	2	2168078-1	SCREW, DRIVE, RH, RoHS, 2 x .188	66
-	1	1	1	1	2119793-1	LIMITER, ADJUSTMENT BOLT	63
-	3	3	3	3	992763-5	SCR, SET, SOC, CONE POINT, M3 X 4.0	62
-	-	-	1	1	5-18022-5	SCR, HEX HD CAP, M4 X 6.0	59
-	-	-	1	1	1338685-1	PAWL, FEED	56
-	1	1	1	1	1-5018030-0	NUT, HEX, REG, RoHS, M3.5	52
-	1	1	1	1	1901681-1	HOLDDOWN, TERMINAL	51
-	-	-	1	2	18023-9	SCR, SKT HD CAP M4 X 6.0	49
-	-	-	-	1	2119652-1	FEED CAM, PRE FEED	48
-	1	1	1	1	2079383-7	SCR, BHSC, RoHS (M8 X 25)	41
-	1	1	1	1	2119645-1	DISC, NUMBERED FA WIRE ADJUSTMENT	40
-	1	1	1	1	2119957-1	APPLICATOR SHIM PACK	39
-	1	1	1	1	2119644-1	RAM WASHER, PRECISION	38
-	1	1	1	1	3-1752356-3	SUPPORT, TERMINAL	34
-	2	2	2	2	2079383-5	SCR, BHSC, RoHS (M4 X 20)	33
-	1	1	1	1	2161328-1	HEX HEAD, FLANGED, M5 X 8mm LONG	32
-	1	1	1	1	1320908-1	SPACER, STRIP GUIDE	30
-	1	1	1	1	2119959-1	ASSEMBLY, STRIP GUIDE	29
-	1	1	1	1	455888-1	SPACER, CRIMPER	28
-	1	1	1	1	1320928-1	STRIP GUIDE	24
-	1	1	1	1	2168083-2	SCR, SKT HD CAP, RoHS, M4 X 8.0	21
-	1	1	1	1	1-18028-2	WASHER, FLAT, REG M4	20
-	1	1	1	1	2119533-1	STRIPPER, SIDE FEED	19
-	1	1	1	1	2119806-1	INSERT, SHEAR	13
-	1	1	1	1	3-22280-3	SPRING, COMPRESSION	12
-	1	1	1	1	1-356885-4	STOP, SHEAR	11
-	1	1	1	1	2119805-1	SHEAR HOLDER, FRONT	10
-	1	1	1	1	1803095-3	FLOATING SHEAR, FRONT	9
1	1	1	1	1	9-1633131-1	ANVIL, COMBINATION .080	8
-	-	-	-	-	-	-	7
-	-	-	-	-	-	-	6
-	1	1	1	1	2119757-8	DEPRESSOR, SHEAR	5
-	1	1	1	1	3-238011-5	BLOCK, CRIMPER SPACER	4
1	1	1	1	1	4-1633966-7	CRIMPER, INSULATION O	3
-	1	1	1	1	455888-5	SPACER, CRIMPER	2
1	1	1	1	1	5-456405-3	CRIMPER, WIRE PREMIUM	1
-77	-27	-25	-22	-21	PART NO	DESCRIPTION	ITEM NO

DIMENSIONS: mm		TOLERANCES UNLESS OTHERWISE SPECIFIED:		OWN: ZOMAY2013		CHK: ZOMAY2013		APVD: ZOMAY2013		NAME: Ocean Side Feed Applicator	
		0 PLC ± .3		APVD: ZOMAY2013		NAME: Ocean Side Feed Applicator		SIZE: A1		CAGE CODE: 00779	
		1 PLC ± .4		PRODUCT SPEC				DRAWING NO: 2151962		RESTRICTED TO: -	
		2 PLC ± .5		APPLICATION SPEC				SCALE: 1:2		SHEET 3 OF 4	
		3 PLC ± .6						REV: E			
		4 PLC ± .8									
		ANGLES									
		FINISH									

LOC		DIST		REVISIONS			
A	66	P	LTN	DESCRIPTION	DATE	DMN	APVD
		-		SEE SHEET 1			

# FEED TYPE MECHANICAL



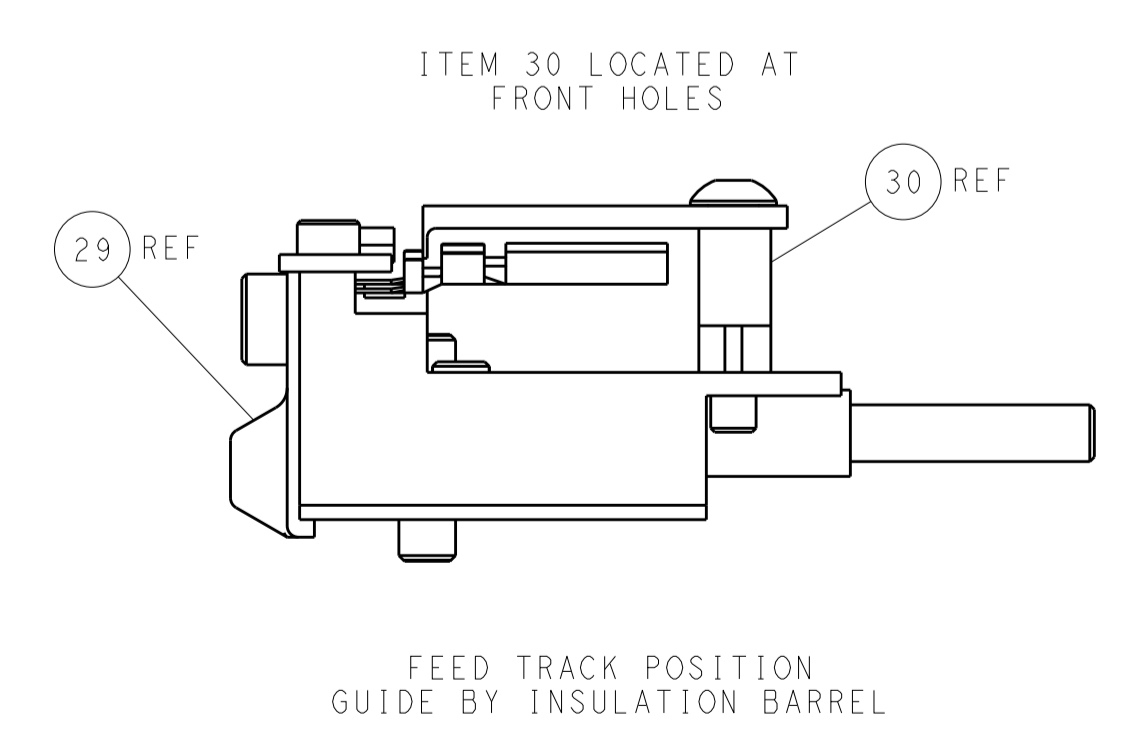
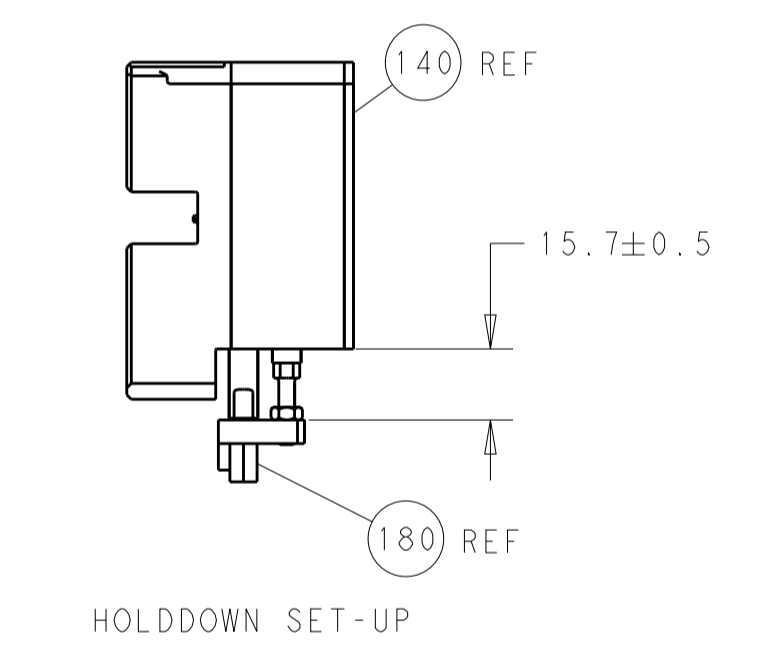
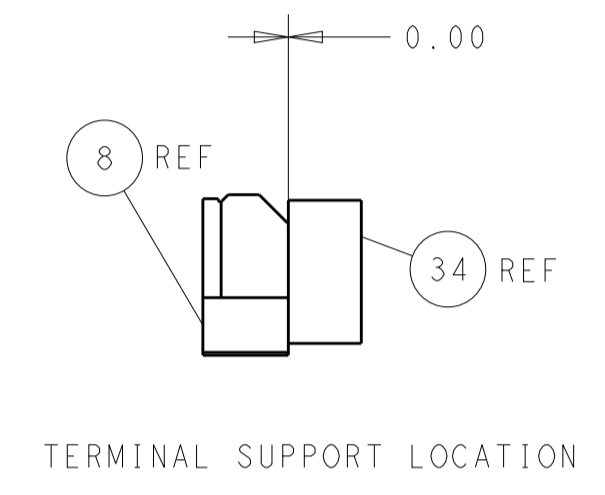
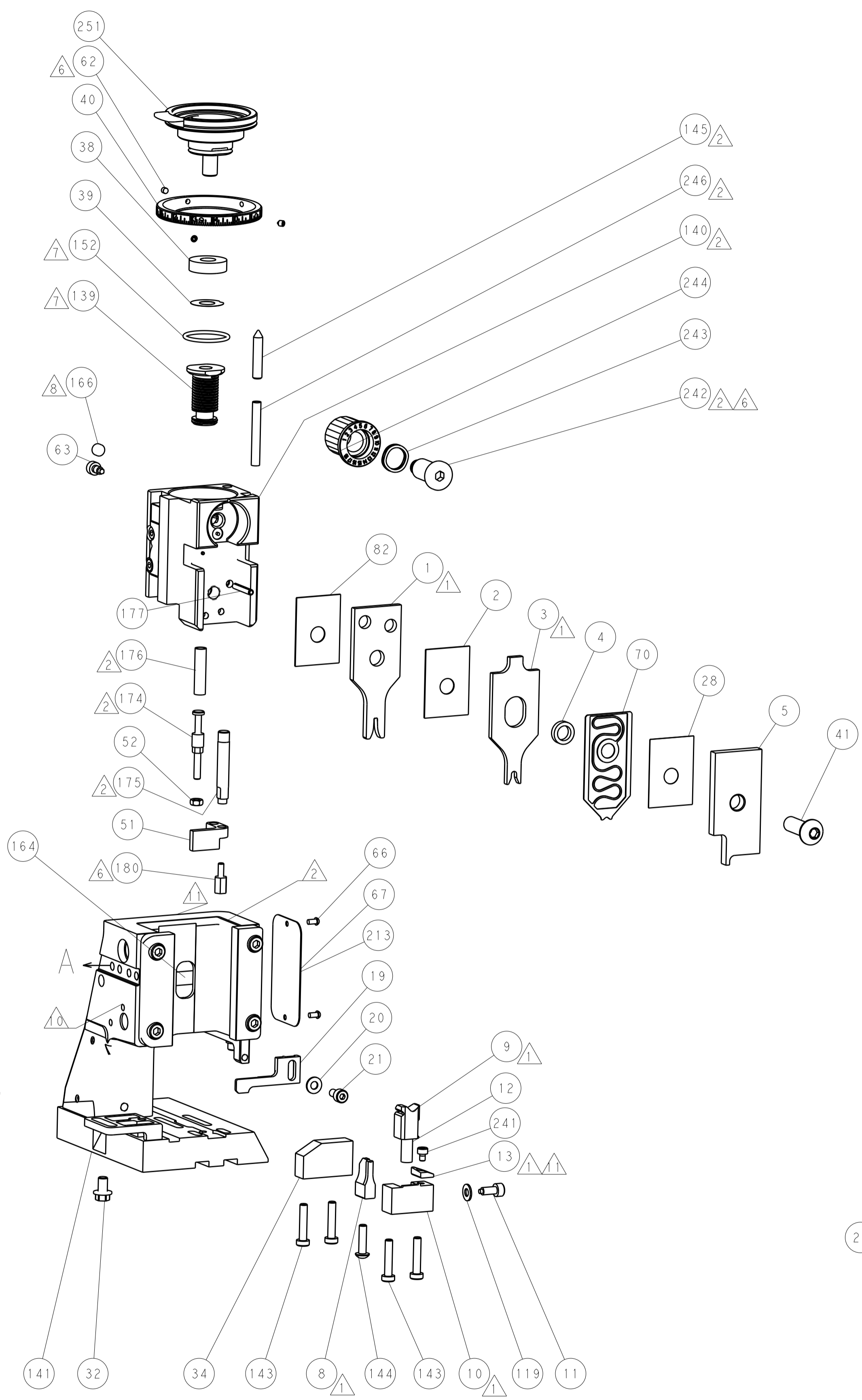
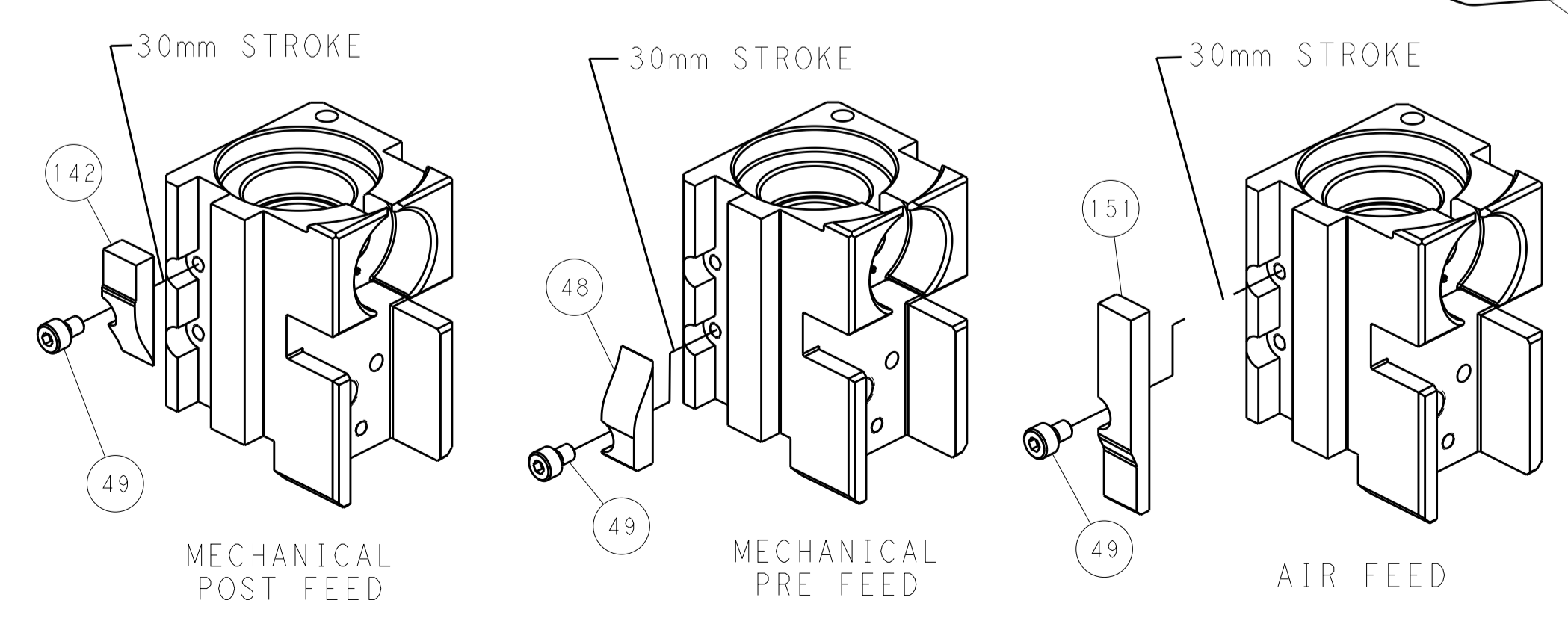
# PNEUMATIC



# SERVO LATCH PLATE



# CAM POSITIONS



**PACIFIC VERSION**  
 Shown on sheets 3 of 4 & 4 of 4  
 (Atlantic version shown on sheets 1 of 4 & 2 of 4)

DIMENSIONS:		TOLERANCES UNLESS OTHERWISE SPECIFIED:		DWG: C. CHEN ZOMAY2013		REV: U. GUO ZOMAY2013		NAME: Ocean Side Feed Applicator	
mm	0 PLC ±	1 PLC ±	2 PLC ±	3 PLC ±	4 PLC ±	APVD: J. CRUZ ZOMAY2013	PRODUCT SPEC:	APPLICATION SPEC:	RESTRICTED TO:
MATERIAL:	FINISH:	WEIGHT:	SCALE: 1:2	SHEET: 4	OF: 4	REV: E	Customer Accessible Production Drawing		