

DUAL-IN-LINE SOCKETS

SERIES 110 • SELECTIVELY LOADED RELAY DIP SOCKET, SOLDER TAIL

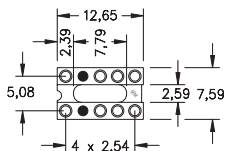
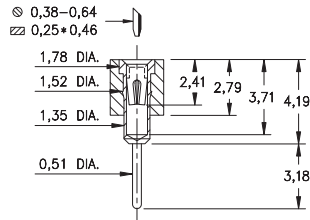


Fig. 1

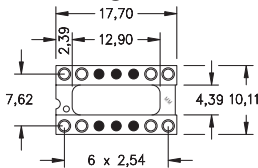


Fig. 2

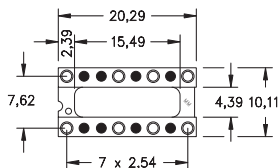


Fig. 3

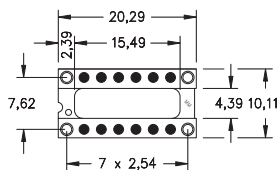


Fig. 4

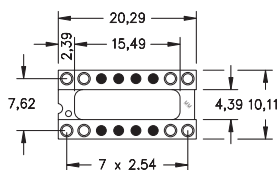


Fig. 5

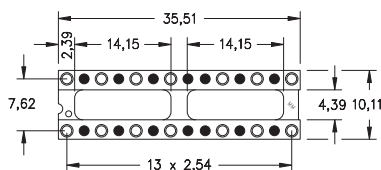
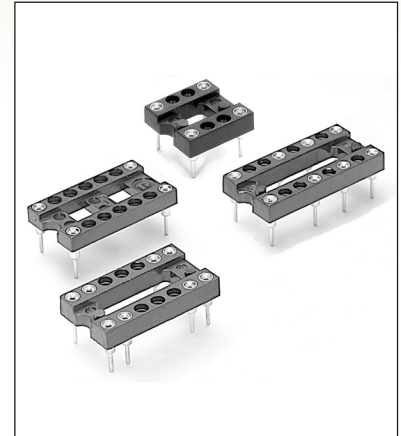


Fig. 6

○ = Loaded Position ● = Empty Position

- Relay sockets accept devices with I/O pins on 2,54 grid
- Additional Relay DIP socket patterns are available on Page 134
- Series 110 use MM #1001 receptacles. See page 165 for details
- Hi-Rel, 4-finger BeCu #30 contact is rated at 3 amps. See page 253 for details
- Insulators are high temperature thermoplastic, suitable for all soldering operations
- For Electrical, Mechanical and Environmental Data, see page 264 for details



ORDERING INFORMATION

FIG. 1	Series 110...002	8 Position Relay Socket			
		110-XX-210-10-002000			
FIG. 2	Series 110...002	8 Position Relay Socket			
		110-XX-314-10-002000			
FIG. 3	Series 110...003	8 Position Relay Socket			
		110-XX-316-10-003000			
FIG. 4	Series 110...004	4 Position Relay Socket			
		110-XX-316-10-004000			
FIG. 5	Series 110...005	8 Position Relay Socket			
		110-XX-316-10-005000			
FIG. 6	Series 110...002	14 Position Relay Socket			
		110-XX-328-10-002000			
<div style="display: flex; justify-content: space-around; align-items: center;"> <div style="border: 1px solid black; border-radius: 50%; padding: 5px;">XX=Plating Code See Below</div> <div style="border: 1px solid black; padding: 5px; text-align: center;">RoHS-2 2011/65/EU</div> </div>					
SPECIFY PLATING CODE XX=		13	93		43
Sleeve (Pin)		0,25µm Au	5,08µm Sn/Pb		5,08µm Sn
Contact (Clip)		0,76µm Au	0,76µm Au		0,76µm Au

