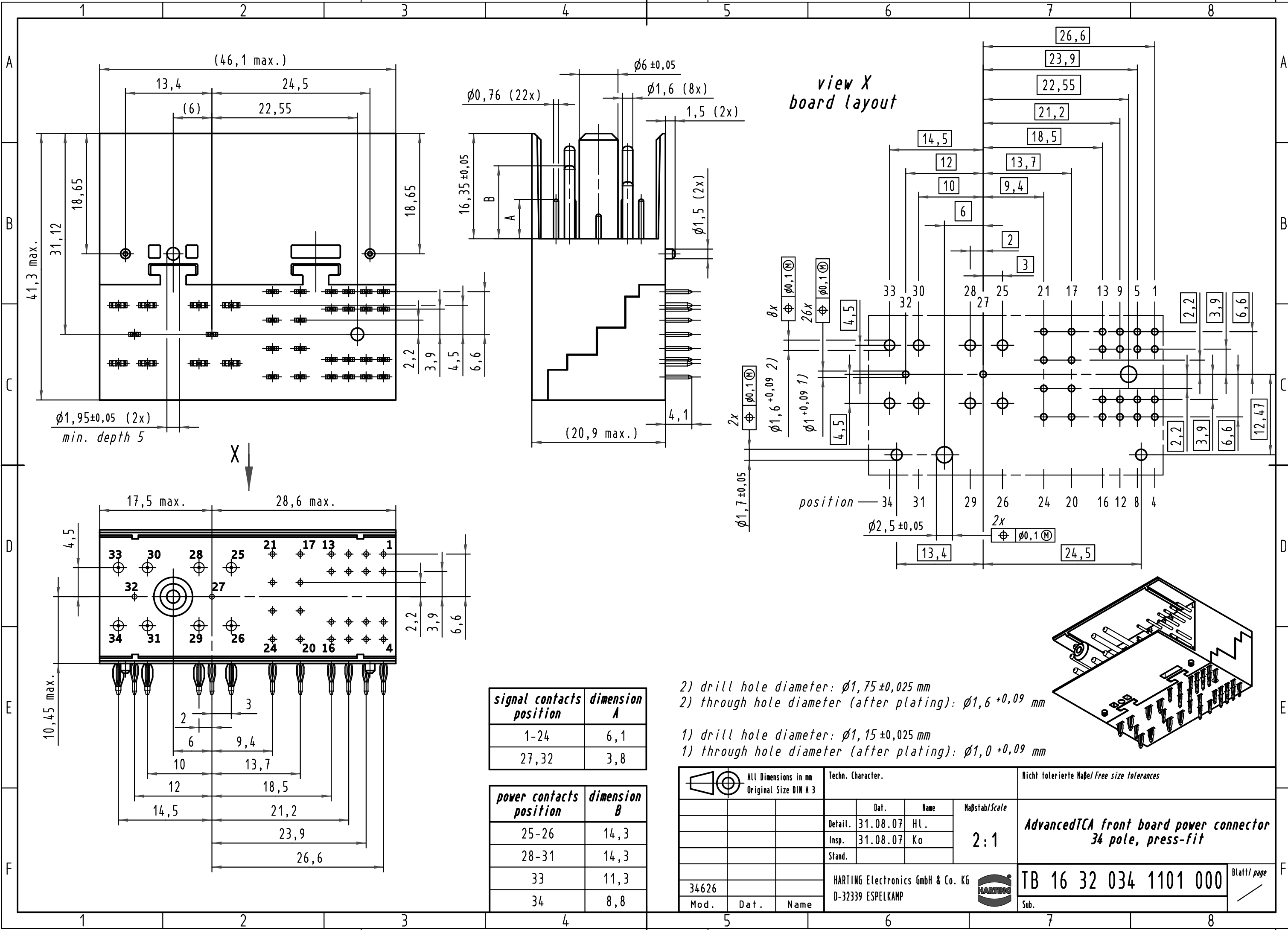


Alle Rechte vorbehalten/ All rights reserved

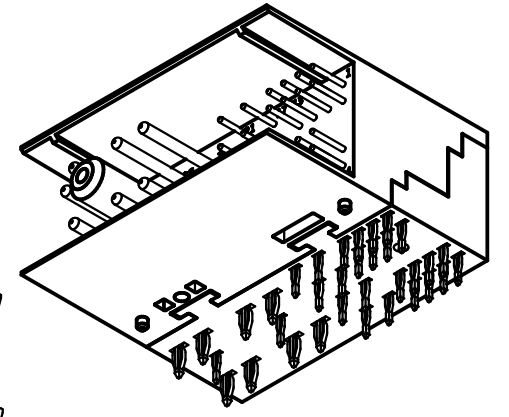


view X
board layout

signal contacts position	dimension A
1-24	6,1
27,32	3,8

power contacts position	dimension B
25-26	14,3
28-31	14,3
33	11,3
34	8,8

- 2) drill hole diameter: $\phi 1,75 \pm 0,025$ mm
 2) through hole diameter (after plating): $\phi 1,6 + 0,09$ mm
- 1) drill hole diameter: $\phi 1,15 \pm 0,025$ mm
 1) through hole diameter (after plating): $\phi 1,0 + 0,09$ mm



All Dimensions in mm Original Size DIN A 3	Techn. Character.			Nicht tolerierte Maß/Free size tolerances	
		Dat.	Name	Maßstab/Scale	
	Detail.	31.08.07	HL.	2:1	
	Insp.	31.08.07	Ko		
	Stand.				
34626	HARTING Electronics GmbH & Co. KG			TB 16 32 034 1101 000 Blatt/page	
Mod.	Dat.	Name	D-32339 ESPELKAMP		

AdvancedTCA front board power connector
34 pole, press-fit