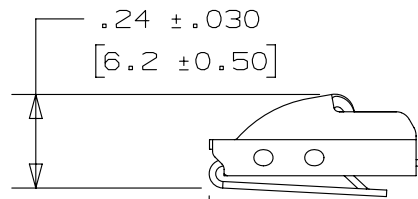
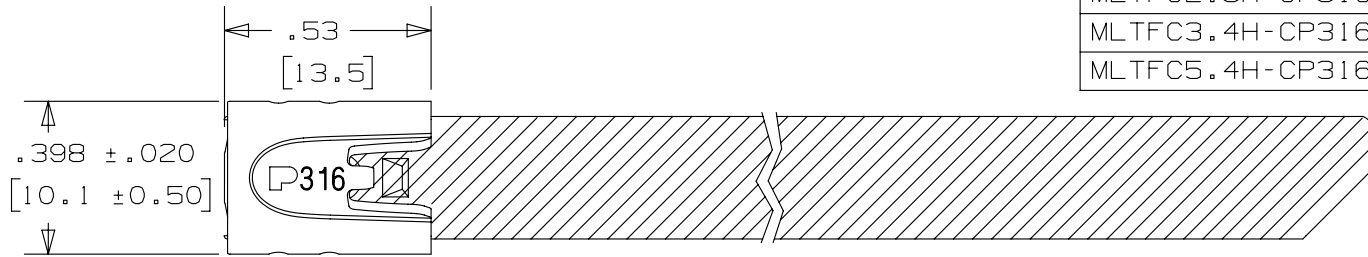


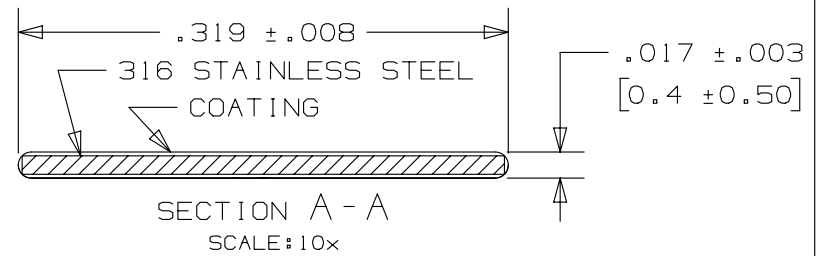
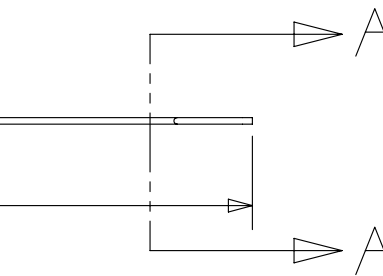
THIS COPY IS PROVIDED ON A RESTRICTED BASIS AND IS NOT TO BE USED IN ANY WAY DETRIMENTAL TO THE INTERESTS OF PANDUIT CORP.

PANDUIT PART NO.	PACKAGE QTY.	MAX BUNDLE DIA	"LENGTH" ±.3 [7]
MLTFC1.5H-CP316	100	1.5" [38]	6.0" [152]
MLTFC2.5H-CP316	100	2.5" [64]	9.0" [229]
MLTFC3.4H-CP316	100	3.4" [86]	12.0" [305]
MLTFC5.4H-CP316	100	5.4" [137]	18.0" [457]



NOTES:

1. APPLICATION TOOLS - GS4MT, PPTMT, ST2MT, HTMT OR ST3MT
2. MINIMUM LOOP TENSILE STRENGTH - 250 LBS. (1112 NEWTONS) WHEN TESTED ON A 1.5" MANDREL.
3. BRACKETS [] DENOTES DIMENSION IN MILLIMETERS, AND ARE FOR REFERENCE ONLY
4. TOLERANCES:
 .XXX = ±.010 [.25]
 .XX = ±.02 [.5]
 .X = ±.03 [.8]
 ANGLES = ±2°
5. MATERIAL: 316 STAINLESS STEEL
6. COATING - POLYESTER
 COATING THICKNESS: .002 MIN./ .005 MAX. PER SIDE



REV	DATE	BY	CHK	APR	DESCRIPTION	ECN
01A	4/13	JAMB	MIM	RGRO	UPDATE DRAWING TO NEW GLOBAL PANDUIT TITLE BLOCK WITH PANDUIT LOGO. ADDED TO NOTE #3: "AND ARE FOR REFERENCE ONLY"	SSECN01051
00A	1/06	JMMR	SKB	---	DRAWING RELEASED	SS00143

TITLE METAL LOCKING TIE - COATED HEAVY SERIES		CUSTOMER DRAWING	
ITEM REVISION NAME N41223BS/01		PANDUIT	
DATASET FILE NAME N41223BS/01			
UNLESS OTHERWISE SPECIFIED, DIMENSIONAL TOLERANCES ARE: IN [mm] .x ± .1 [2.54] .xxx ± .005 [.127] .xx ± .01 [.25] ANGLES ± 5 °		MATERIAL: 316 STAINLESS STEEL	
DRAWN BY JMMR		DRAWING NUMBER: N41223BS_DC	
DATE 1/06	CHK SKB	SCALE 2:1	SHT 1 OF 1
		SIZE A	