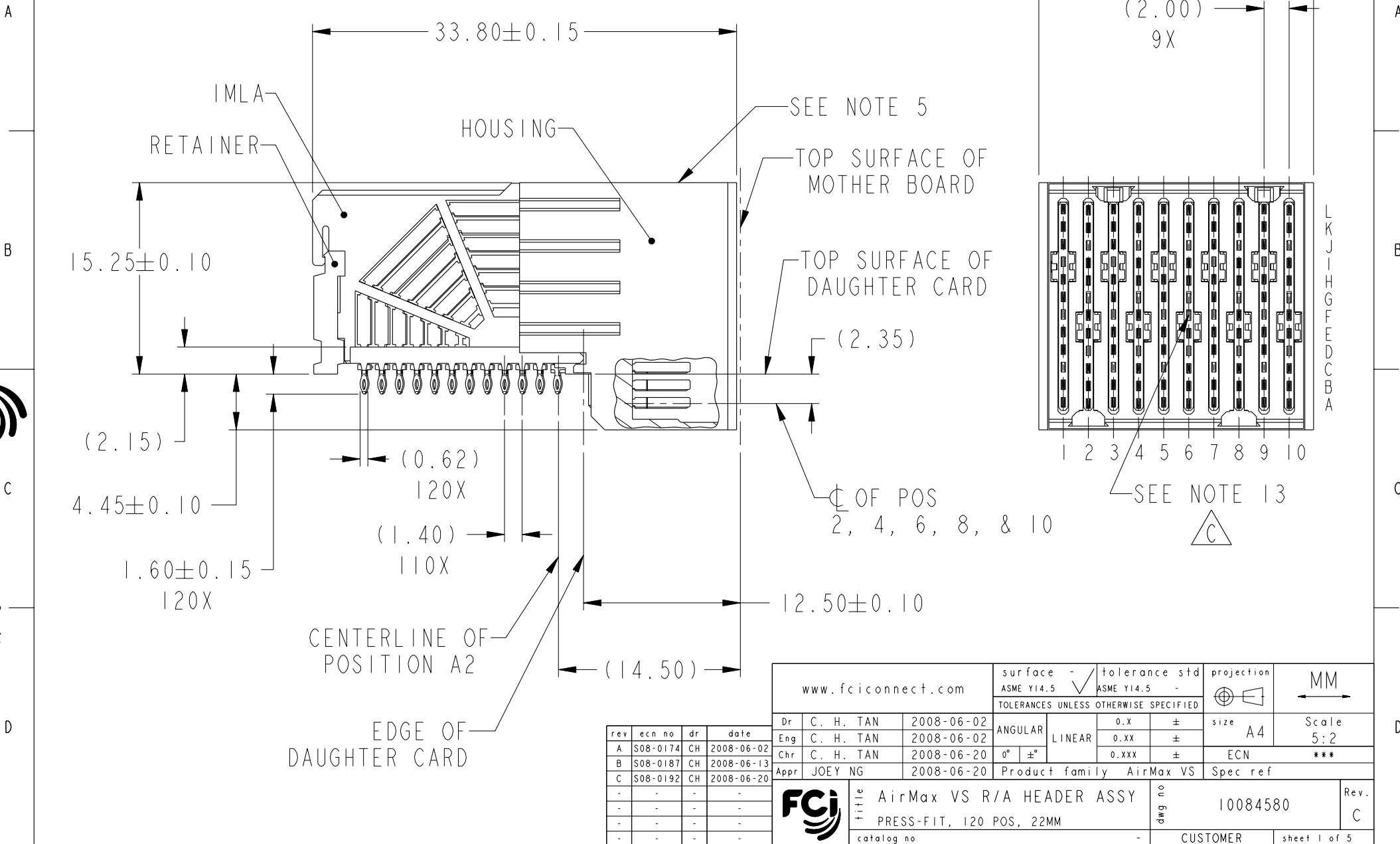


PRODUCT NUMBER  
SEE TABLE, SHEET 5



Copyright FCI.

| rev | ecn no   | dr | date       |
|-----|----------|----|------------|
| A   | S08-0174 | CH | 2008-06-02 |
| B   | S08-0187 | CH | 2008-06-13 |
| C   | S08-0192 | CH | 2008-06-20 |
| -   | -        | -  | -          |
| -   | -        | -  | -          |
| -   | -        | -  | -          |
| -   | -        | -  | -          |

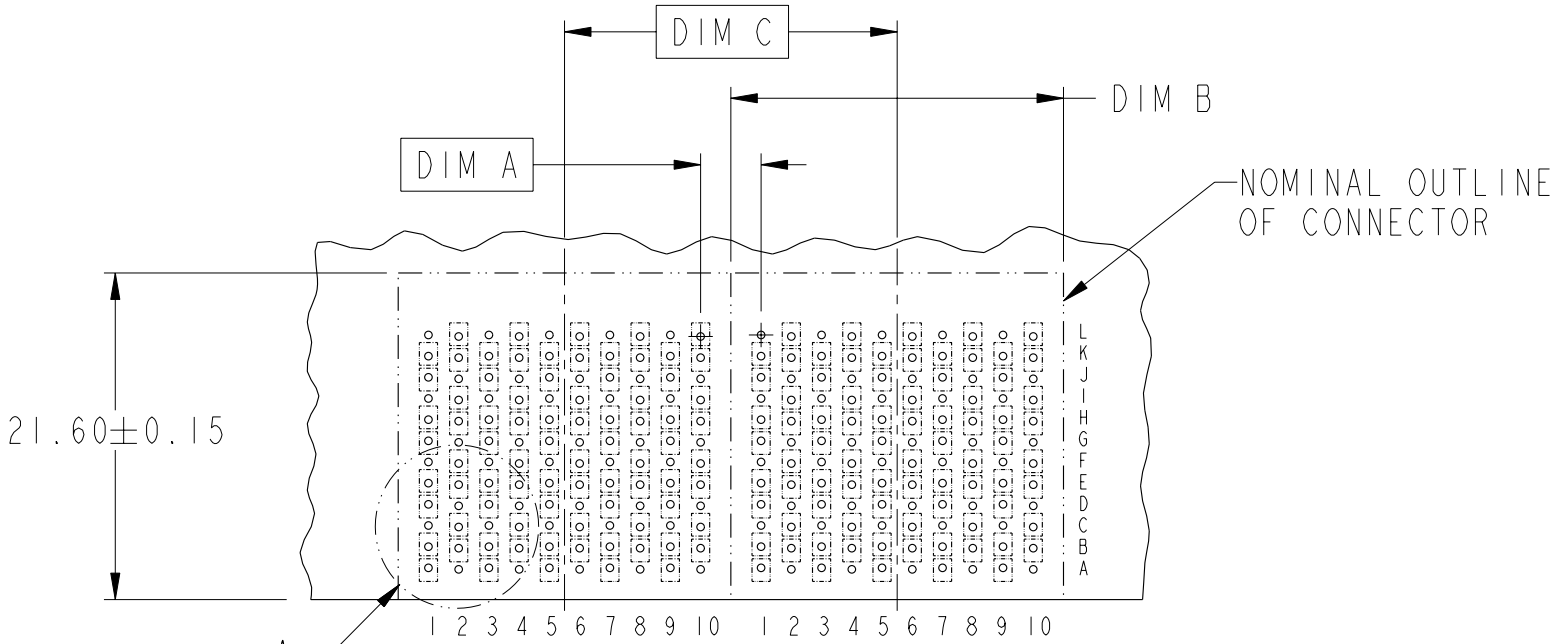
|                    |           |                                       |                            |                          |              |
|--------------------|-----------|---------------------------------------|----------------------------|--------------------------|--------------|
| www.fciconnect.com |           | surface - ASME Y14.5                  | tolerance std - ASME Y14.5 | projection               | MM           |
|                    |           | TOLERANCES UNLESS OTHERWISE SPECIFIED |                            |                          |              |
| Dr                 | C. H. TAN | 2008-06-02                            | ANGULAR                    | size A4                  | Scale 5:2    |
| Eng                | C. H. TAN | 2008-06-02                            | LINEAR                     | ECN                      | ***          |
| Chr                | C. H. TAN | 2008-06-20                            | 0° ±°                      | Product family AirMax VS | Spec ref     |
| Appr               | JOEY NG   | 2008-06-20                            | Product family AirMax VS   |                          | Spec ref     |
|                    |           | AirMax VS R/A HEADER ASSY             |                            | dwg no 10084580          | Rev. C       |
|                    |           | PRESS-FIT, 120 POS, 22MM              |                            | CUSTOMER                 | sheet 1 of 5 |
|                    |           | catalog no                            |                            |                          |              |

REV F - 2006-04-17



Copyright FCI.

| DESCRIPTION   | DIM A | DIM B                  | DIM C |
|---|-------|------------------------|-------|
| 2-22MM MODULES<br>PLACED END-TO-END                   | 4.00  | 21.90 2X               | 22.00 |
| 1-20MM MODULE &<br>1-22MM MODULE<br>PLACED END-TO-END | 3.00  | 19.90 1X &<br>21.90 1X | 21.00 |

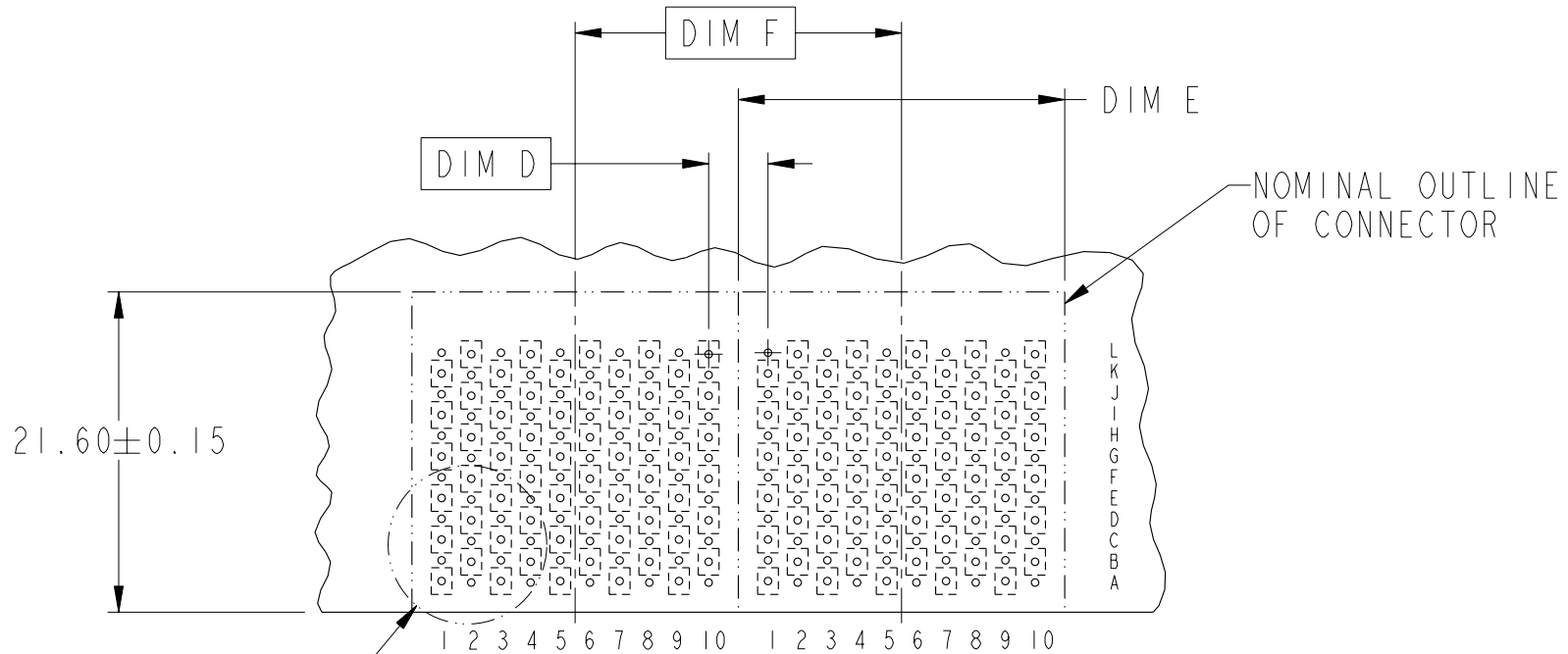


RECOMMENDED PCB LAYOUT  
FOR DIFFERENTIAL APPLICATIONS  
COMPONENT SIDE  
(TWO ADJACENT FOOTPRINTS SHOWN)  
NOTES 6 & 7



|            |                           |          |              |          |      |   |
|------------|---------------------------|----------|--------------|----------|------|---|
| TITLE      | AirMax VS R/A HEADER ASSY |          | dwg no       | 10084580 | Rev. | C |
|            | PRESS-FIT, 120 POS, 22MM  |          |              |          |      |   |
| CATALOG NO | -                         | CUSTOMER | sheet 2 of 5 |          |      |   |

| DESCRIPTION   | DIM D | DIM E                  | DIM F |
|---|-------|------------------------|-------|
| 2-22MM MODULES<br>PLACED END-TO-END                   | 4.00  | 21.90 2X               | 22.00 |
| 1-20MM MODULE &<br>1-22MM MODULE<br>PLACED END-TO-END | 3.00  | 19.90 1X &<br>21.90 1X | 21.00 |



RECOMMENDED PCB LAYOUT  
FOR SINGLE ENDED APPLICATIONS  
COMPONENT SIDE  
(TWO ADJACENT FOOTPRINTS SHOWN)  
NOTES 6 & 7



title AirMax VS R/A HEADER ASSY  
PRESS-FIT, 120 POS, 22MM  
catalog no -

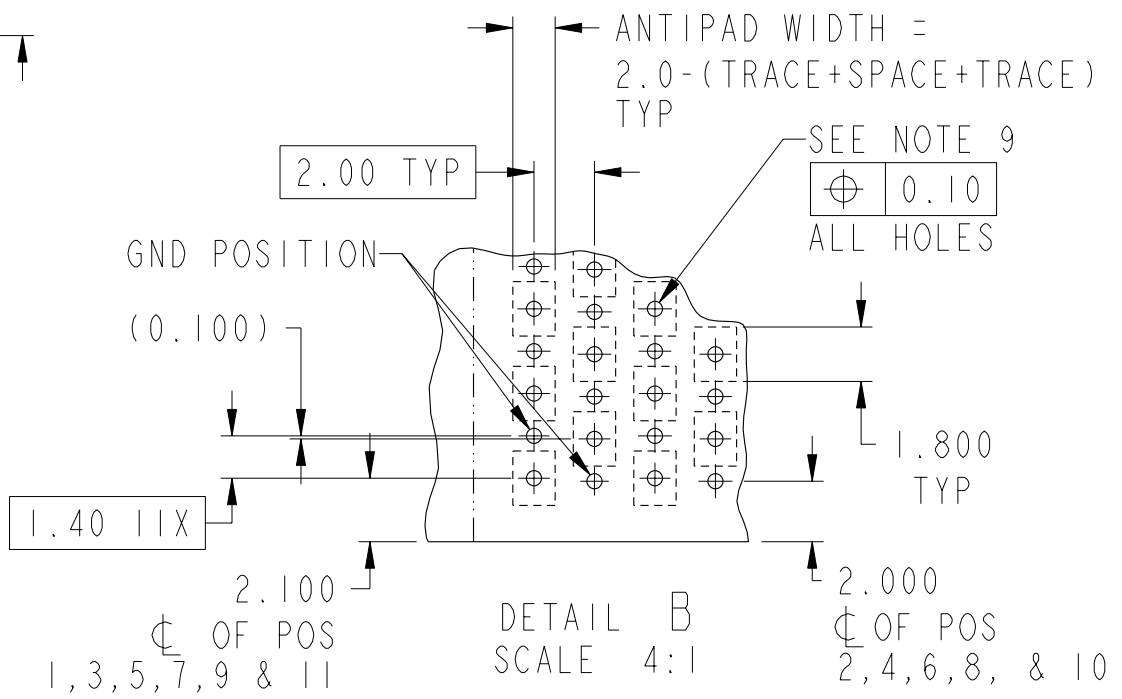
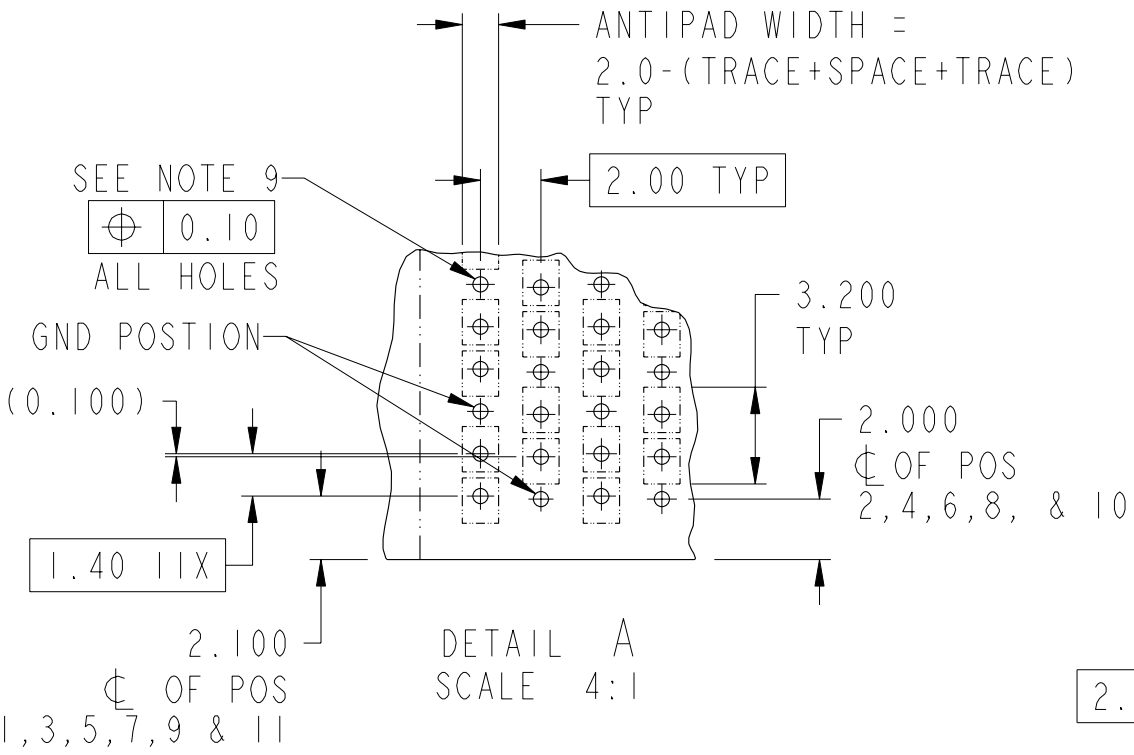
dwg no 10084580

Rev. C

CUSTOMER sheet 3 of 5



Copyright FCI.

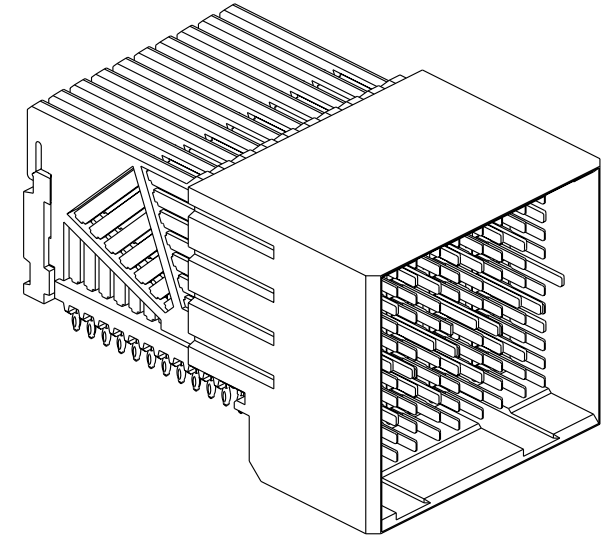


AirMax VS R/A HEADER ASSY  
PRESS-FIT, 120 POS, 22MM  
catalog no

dwg no 10084580  
CUSTOMER

Rev. C  
sheet 4 of 5

| PART NUMBER    | PRESS-FIT TAIL PLATING TYPE | SHORT DETECT CONTACT |
|----------------|-----------------------------|----------------------|
| 10084580-101LF | TIN OVER NICKEL (LEAD FREE) | NO                   |
| 10084580-111LF | TIN OVER NICKEL (LEAD FREE) | YES (SEE NOTE 13)    |



NOTES:

1. CONNECTOR MATERIALS:  
 HOUSING & RETAINER: HIGH TEMP THERMOPLASTIC, NATURAL, UL94V-0  
 IMLA PLASTIC: HIGH TEMP THERMOPLASTIC, BLACK, UL94V-0  
 CONTACT: COPPER ALLOY

2. CONTACT PLATING:  
 SEPARABLE INTERFACE:  
 PERFORMANCE-BASED PLATING, QUALIFIED TO MEET THE REQUIREMENTS OF FCI PRODUCT SPECIFICATION GS-12-239, INCLUDING TELCORDIA GR-1217-CORE (NOVEMBER 1995) CENTRAL OFFICE.  
 PRESS-FIT TAILS: SEE TABLE

3. PRODUCT SPECIFICATION: GS-12-239

4. APPLICATION SPECIFICATION: GS-20-035

5. PRODUCT MARKING, (PART NUMBER & LOT CODE), ON THIS SURFACE

6. REFER TO CUSTOMER DRAWING 10035911 FOR INFORMATION REGARDING PCB LAYOUT OF POWER AND GUIDE MODULES RELATIVE TO SIGNAL MODULES

7. POSITIONS F OF ODD NUMBERED COLUMNS AND POSITIONS G OF EVEN NUMBERED COLUMNS CORRESPOND TO EARLY MATE HEADER PINS

8. THERE IS NO GROUND BUSSING WITHIN THE CONNECTOR SYSTEM


9. REFER TO CUSTOMER DRAWING 10045979 FOR INFORMATION ON PCB HOLE DIAMETERS AND PLATING OPTIONS.

10. THIS PRODUCT MEETS EUROPEAN UNION DIRECTIVES AND OTHER COUNTRY REGULATIONS AS DESCRIBED IN GS-22-008.

11. THE HOUSING WILL WITHSTAND EXPOSURE TO 260°C PEAK TEMPERATURE FOR 40 SECONDS IN A CONVECTION, INFRA-RED OR VAPOR PHASE REFLOW OVEN.

12. PACKAGING MEETS GS-14-920 LEAD FREE LABELING SPECIFICATION.

13. MATING PIN F6 IS SHORTER THAN THE REMAINING SIGNAL PIN. NOMINAL MATING WIPE FOR PIN F6 IS 0.5MM LESS THAN ALL REMAINING SIGNAL PINS

14. A  SYMBOL WILL BE NEXT TO ANY DIMENSION, VIEW, OR NOTE WHICH HAS BEEN MODIFIED WITH THE CURRENT DRAWING REVISION.

|   |  |                    |              |
|---|--|--------------------|--------------|
|  | title<br>AirMax VS R/A HEADER ASSY<br>PRESS-FIT, 120 POS, 22MM | dwg no<br>10084580 | Rev.<br>C    |
|   | catalog no<br>-  | CUSTOMER           | sheet 5 of 5 |